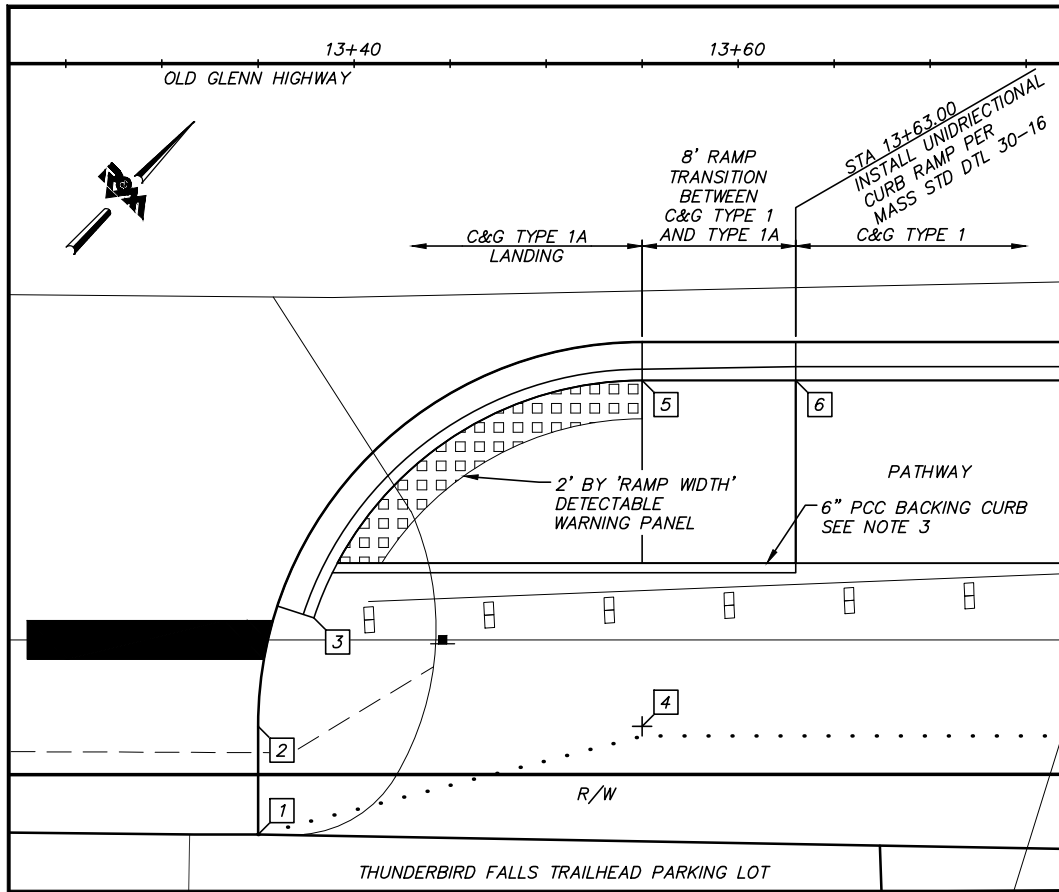
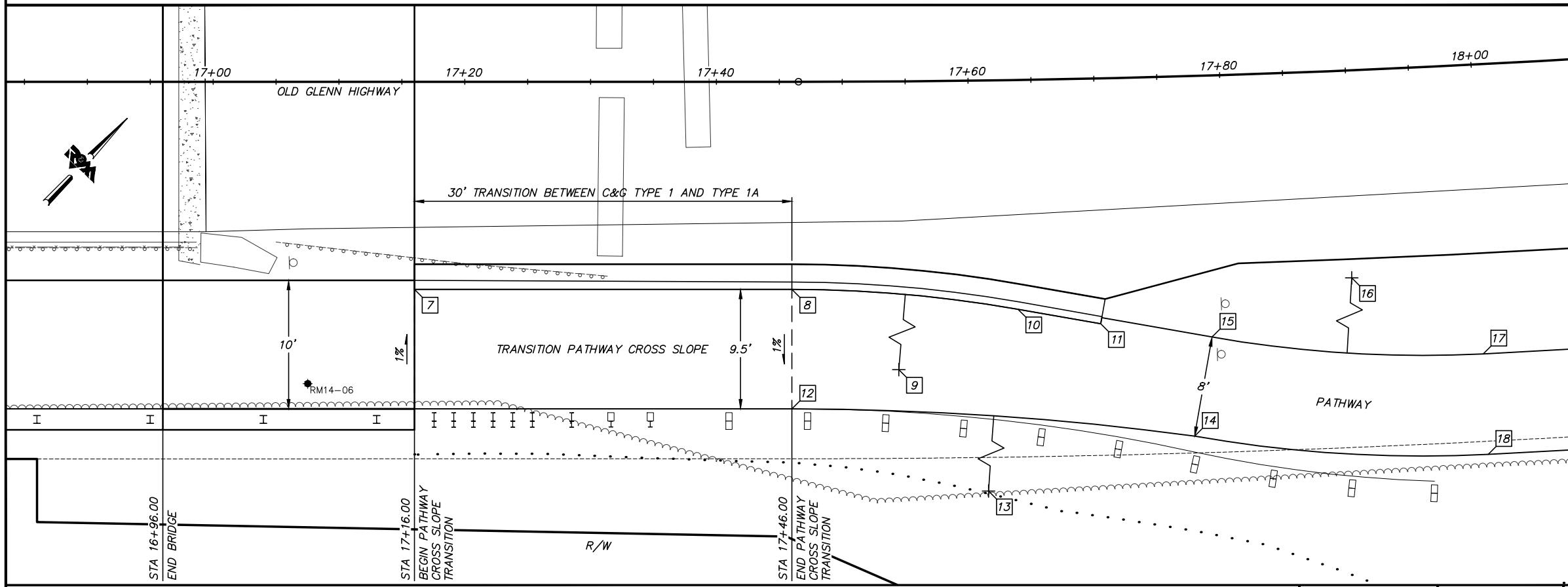


Plotted: 6/6/2014 10:38 AM File Location: z:\project\2001.01 MOA_PME Replacement of Eklutna Bridge\Civil\ACAD\2001.01-G-Grading & Details.dwg



#	POINT	STATION	OFFSET	NOTE
1	13+35.00	40.14' RT	MATCH EXISTING	
2	13+35.00	35.50' RT	DRIVEWAY PC	
3	13+37.91	28.86' RT	CURB PC, BEGIN C&G TYPE 1A	
4	13+55.00	34.50' RT	RP, R=18.00'	
5	13+55.00	16.50' RT	PT, END C&G TYPE 1A	
6	13+63.00	16.50' RT	BEGIN C&G TYPE 1	
7	17+16.00	16.50' RT	END C&G TYPE 1	
8	17+46.00	16.50' RT	PC, BEGIN C&G TYPE 1A	
9	17+46.00	120.00' RT	RP, R=103.50'	
10	17+63.68	18.22' RT	PT	
11	17+70.11	19.50' RT	END C&G TYPE 1A	
12	17+46.00	26.00' RT	PC, BEGIN PATHWAY WIDTH TRANSITION	
13	17+46.00	263.92' RT	RP, R=237.92'	
14	17+77.18	28.62' RT	PRC, END PATHWAY WIDTH TRANSITION	
15	17+78.76	20.79' RT	PC	
16	17+99.79	73.00' LT	RP, R=96.00'	
17	17+99.79	23.00' RT	PT	
18	17+99.79	31.00' RT	PT	



- NOTES:**
- CURB STATION AND OFFSET LAYOUT REFERENCES TOP BACK OF CURB.
 - PCC BACKING CURB IS INCIDENTAL TO CURB RAMP AND NO ADDITIONAL PAYMENT WILL BE MADE.

**65% DESIGN
JUNE 2014**

FIELD BOOKS	BM NO.	LOCATION	ELEV.	DATA	DRAWN BY	CHECKED BY	DATA	DRAWN BY	CHECKED BY	REV	DATE	DESCRIPTION	BY	REV	DATE	DESCRIPTION	BY
DESIGN				BASE			TELEPHONE										
STAKING				TOPOGRAPHY			ELECTRIC										
ASBULT				PROFILE			CABLE TV										
CONTRACTOR				SANITARY SEWER			DESIGN										
INSPECTOR				STORM SEWER			QUANTITIES										
				WATER			MUN. FINAL CHK.										
				GAS													
CONSTRUCTION RECORD		VERTICAL DATUM		PLAN CHECK			REVISIONS										

R&M Consultants, Inc.
9101 Vanguard Drive
Anchorage, Alaska 99507
907 522 1707 voice
907 522 3404 fax
www.rmconsult.com



**PROJECT MANAGEMENT AND
ENGINEERING DIVISION**

12-40
EKLUTNA RIVER BRIDGE REPLACEMENT AT OLD GLENN HWY
THUNDERBIRD DRIVE TO EKLUTNA LAKE ROAD

PATHWAY & CURB TRANSITION DETAILS

SCALE 1:10 DATE 6/6/14 GRID NW1965 SHEET 16 of 44
ACCT. NO.