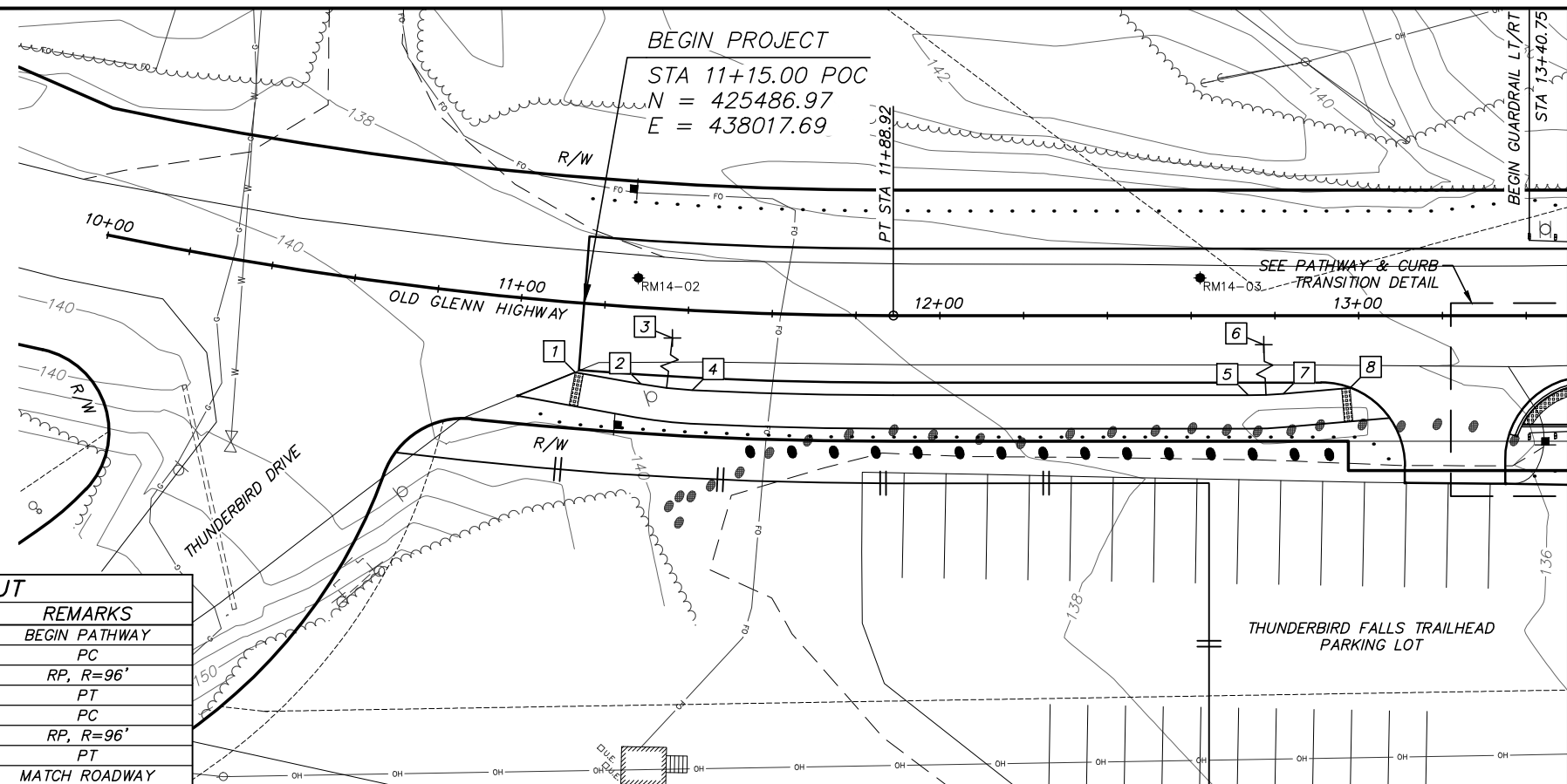
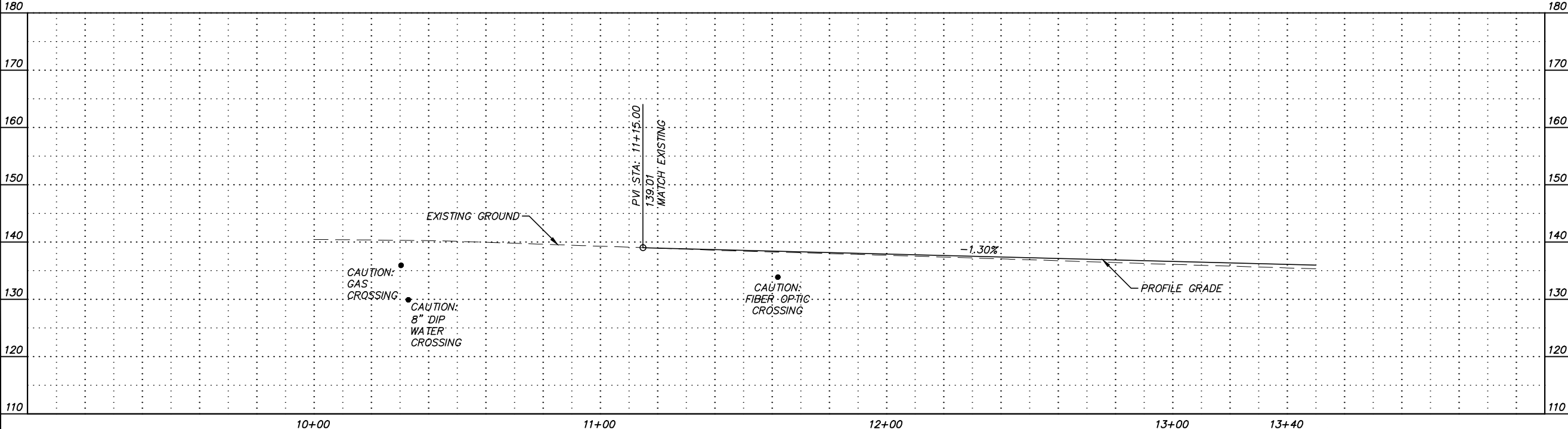
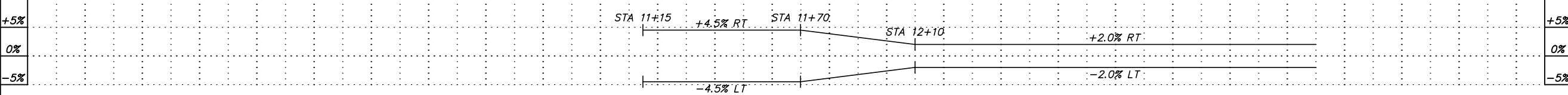


BEGIN PROJECT

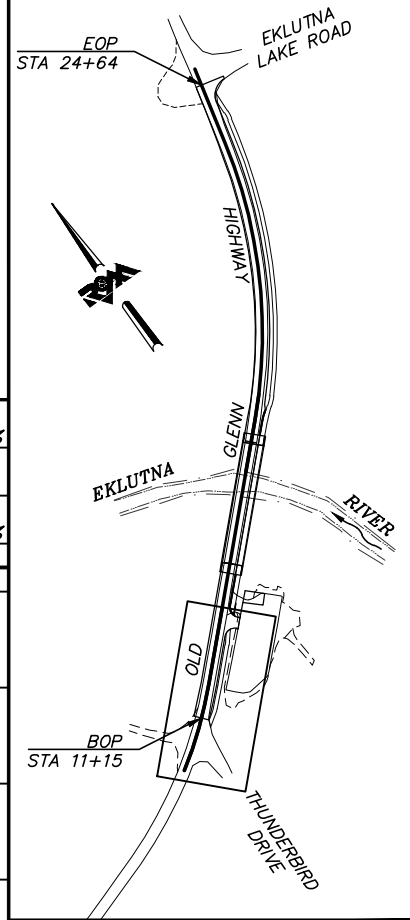
STA 11+15.00 POC
 N = 425486.97
 E = 438017.69



#	POINT	STATION	OFFSET	REMARKS
	1	11+14.20	16.58 RT	BEGIN PATHWAY
	2	11+29.81	18.29 RT	PC
	3	11+41.87	77.00 LT	RP, R=96'
	4	11+41.87	19.00 RT	PT
	5	12+73.69	19.00 RT	PC
	6	12+73.69	77.00 LT	RP, R=96'
	7	12+82.06	18.63 RT	PT
	8	12+97.95	17.24 RT	MATCH ROADWAY



LOCATE CALL CENTER OF ALASKA STATEWIDE 800-478-3121 WILL NOTIFY SUBSCRIBED UTILITIES ONLY. OTHER UTILITIES NEED TO BE CONTACTED INDIVIDUALLY.



KEYMAP

65% DESIGN
 JUNE 2014



Plotted: 6/6/2014 10:36 AM File Location: Z:\project\2001.01 MOA_PME Replacement of Eklutna Bridge\Civil\ACAD\2001.01-F-P&Ps.dwg

FIELD BOOKS	BM NO.	LOCATION	ELEV.	DATA	DRAWN BY	CHECKED BY	DATA	DRAWN BY	CHECKED BY	REV	DATE	DESCRIPTION	BY	REV	DATE	DESCRIPTION	BY
DESIGN				BASE			TELEPHONE										
STAKING				TOPOGRAPHY			ELECTRIC										
ASBULT				PROFILE			CABLE TV										
CONTRACTOR				SANITARY SEWER			DESIGN										
INSPECTOR				STORM SEWER			QUANTITIES										
CONSTRUCTION RECORD				WATER			MUN. FINAL CHK.										
				GAS													

R&M Consultants, Inc.
 9101 Vanguard Drive
 Anchorage, Alaska 99507
 907 522 1707 voice
 907 522 3404 fax
 www.rmconsult.com



PROJECT MANAGEMENT AND ENGINEERING DIVISION

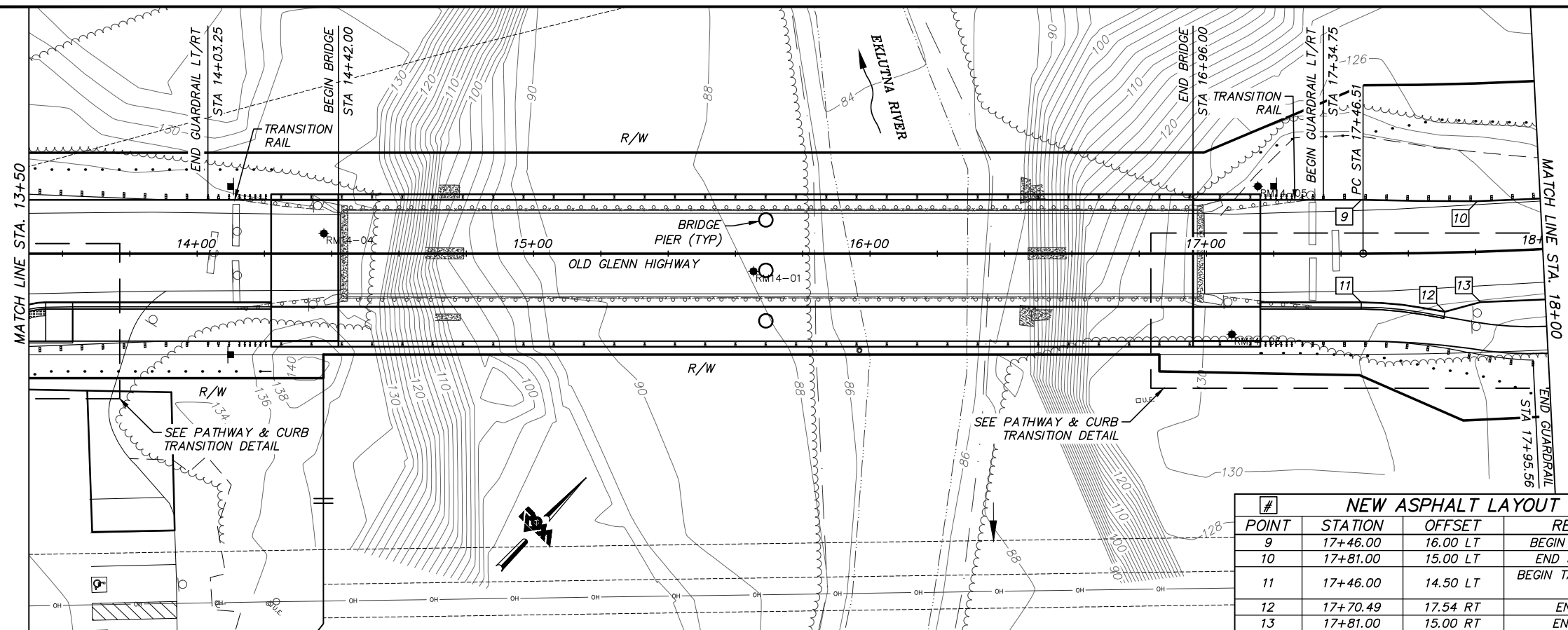
12-40 EKLUTNA RIVER BRIDGE REPLACEMENT AT OLD GLENN HWY THUNDERBIRD DRIVE TO EKLUTNA LAKE ROAD

ROADWAY IMPROVEMENTS

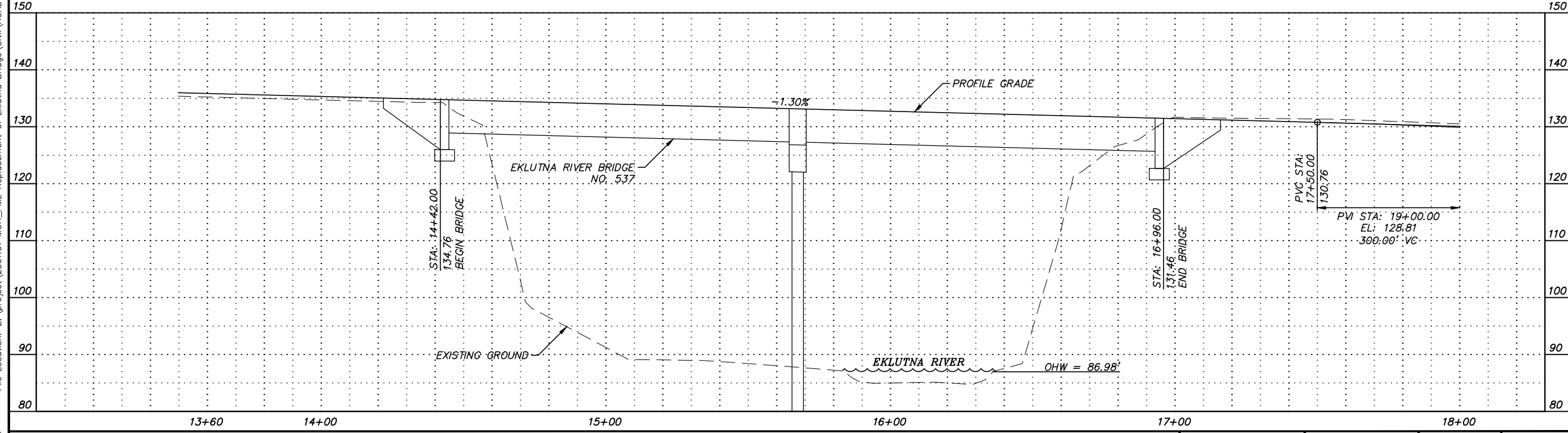
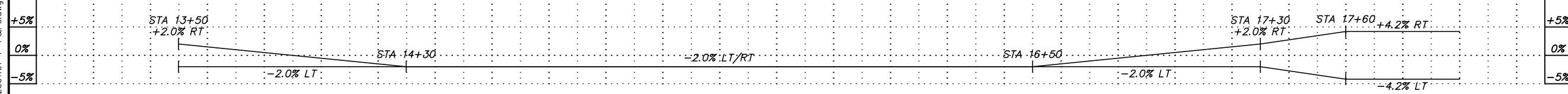
BOP TO STA 13+50

SCALE H: 1:20 DATE 6/6/14 GRID NW1965 SHEET 11 of 44
 V: 1:10 ACCT. NO.

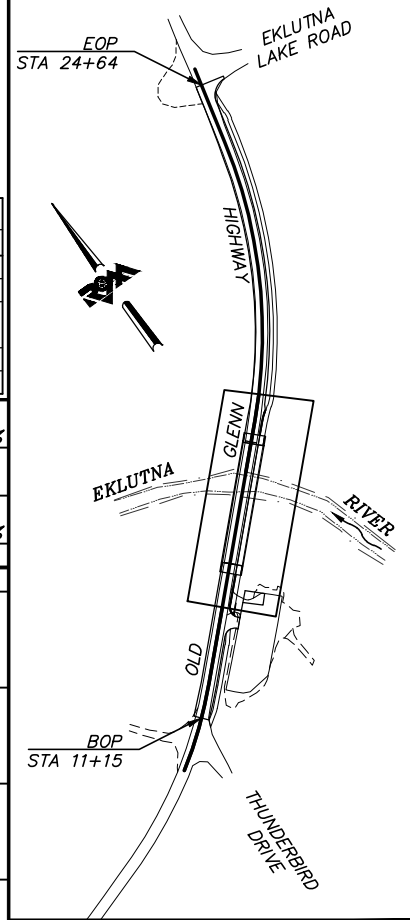
Plotted: 6/6/2014 10:37 AM File Location: Z:\project\2001.01 MOA_PME Replacement of Eklutna Bridge\Civil\ACAD\2001.01-F-P&Ps.dwg



#	POINT	STATION	OFFSET	REMARKS
9		17+46.00	16.00 LT	BEGIN 35:1 TAPER
10		17+81.00	15.00 LT	END 35:1 TAPER
11		17+46.00	14.50 LT	BEGIN TAPER (FOLLOW CURB)
12		17+70.49	17.54 RT	END CURB
13		17+81.00	15.00 RT	END TAPER

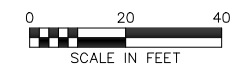


LOCATE CALL CENTER OF ALASKA STATEWIDE 800-478-3121 WILL NOTIFY SUBSCRIBED UTILITIES ONLY. OTHER UTILITIES NEED TO BE CONTACTED INDIVIDUALLY.



KEYMAP

**65% DESIGN
JUNE 2014**



FIELD BOOKS	BM NO.	LOCATION	ELEV.	DATA	DRAWN BY	CHECKED BY	DATA	DRAWN BY	CHECKED BY	REV	DATE	DESCRIPTION	BY	REV	DATE	DESCRIPTION	BY
DESIGN				BASE			TELEPHONE										
STAKING				TOPOGRAPHY			ELECTRIC										
ASBULT				PROFILE			CABLE TV										
CONTRACTOR				SANITARY SEWER			DESIGN										
INSPECTOR				STORM SEWER			QUANTITIES										
				WATER			MUN. FINAL CHK.										
				GAS													
CONSTRUCTION RECORD				PLAN CHECK													

R&M Consultants, Inc.
9101 Vanguard Drive
Anchorage, Alaska 99507
907 522 1707 voice
907 522 3404 fax
www.rmconsult.com



PROJECT MANAGEMENT AND ENGINEERING DIVISION

12-40 EKLUTNA RIVER BRIDGE REPLACEMENT AT OLD GLENN HWY THUNDERBIRD DRIVE TO EKLUTNA LAKE ROAD

ROADWAY IMPROVEMENTS

STA 13+50 TO 18+00

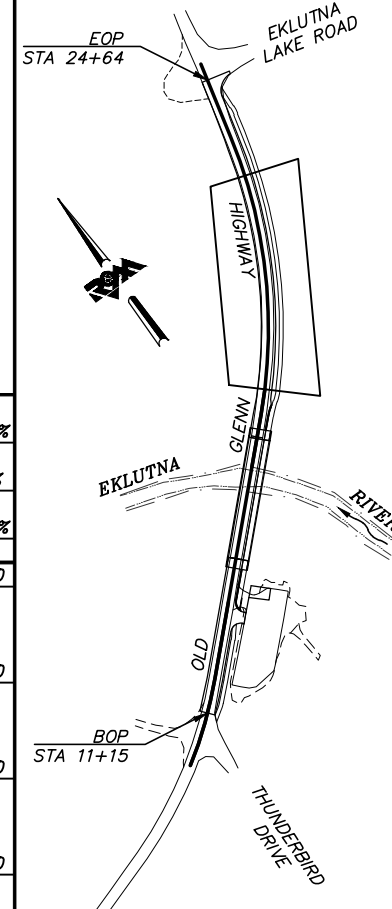
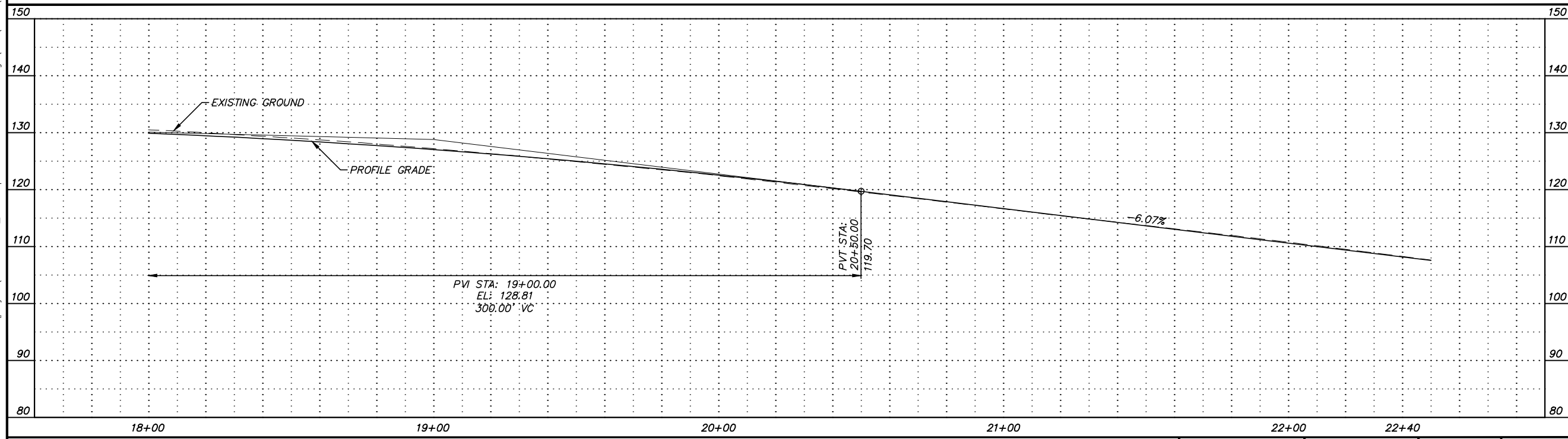
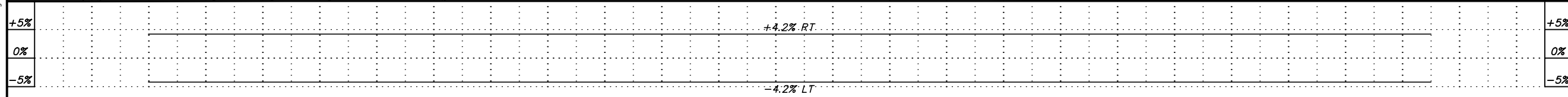
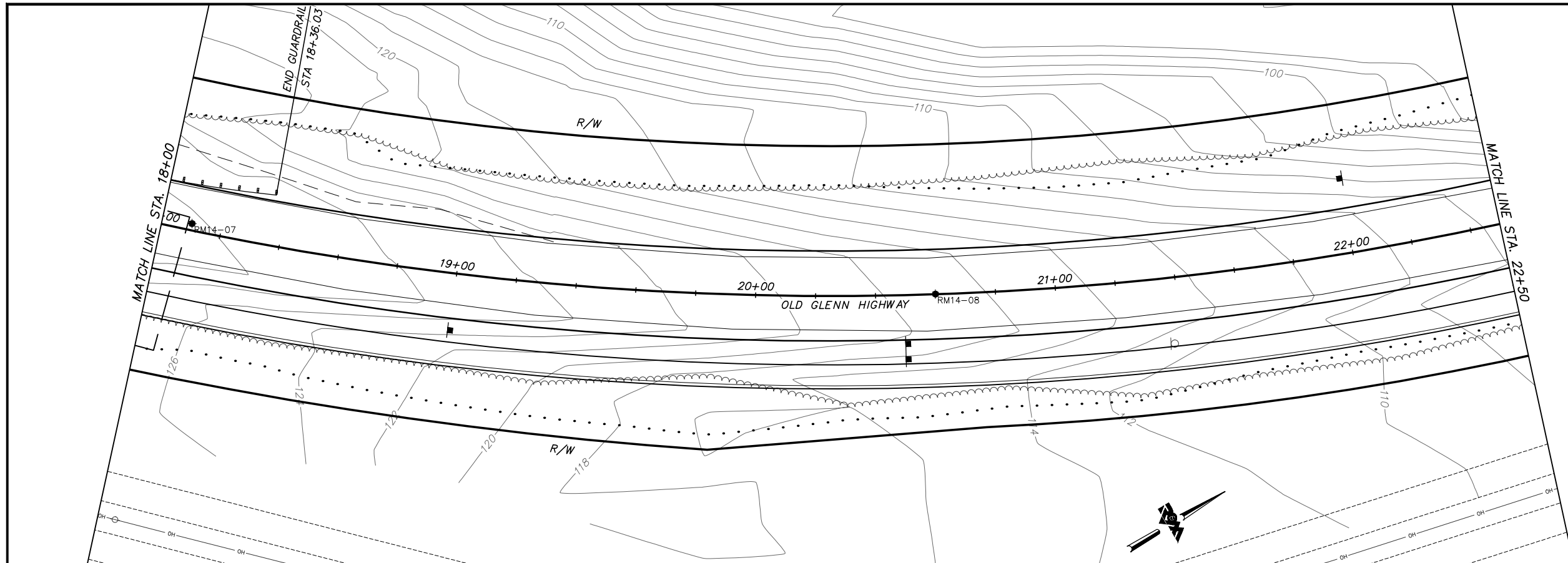
SCALE H: 1:20 DATE 6/6/14 GRID NW1965 SHEET 12 of 44
V: 1:10 ACCT. NO.

Plotted: 6/6/2014 10:37 AM File Location: Z:\project\2001.01 MOA_PME Replacement of Eklutna Bridge\Civil\ACAD\2001.01-F-P&Ps.dwg



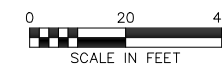
**BEFORE YOU DIG
CALL FOR FREE
UNDERGROUND
LOCATION**

LOCATE CALL CENTER OF ALASKA
STATEWIDE 800-478-3121 WILL
NOTIFY SUBSCRIBED UTILITIES ONLY.
OTHER UTILITIES NEED TO BE
CONTACTED INDIVIDUALLY.



KEYMAP

**65% DESIGN
JUNE 2014**



FIELD BOOKS	BM NO.	LOCATION	ELEV.	DATA	DRAWN BY	CHECKED BY	DATA	DRAWN BY	CHECKED BY	REV	DATE	DESCRIPTION	BY	REV	DATE	DESCRIPTION	BY
DESIGN				BASE			TELEPHONE										
STAKING				TOPOGRAPHY			ELECTRIC										
ASBUILT				PROFILE			CABLE TV										
CONTRACTOR				SANITARY SEWER			DESIGN										
INSPECTOR				STORM SEWER			QUANTITIES										
				WATER			MUN. FINAL CHK.										
				GAS													
CONSTRUCTION RECORD				VERTICAL DATUM			PLAN CHECK										

R&M
R&M Consultants, Inc.
9101 Vanguard Drive
Anchorage, Alaska 99507
907 522 1707 voice
907 522 3404 fax
www.rmconsult.com



**PROJECT MANAGEMENT AND
ENGINEERING DIVISION**

12-40
EKLUTNA RIVER BRIDGE REPLACEMENT AT OLD GLENN HWY
THUNDERBIRD DRIVE TO EKLUTNA LAKE ROAD

ROADWAY IMPROVEMENTS

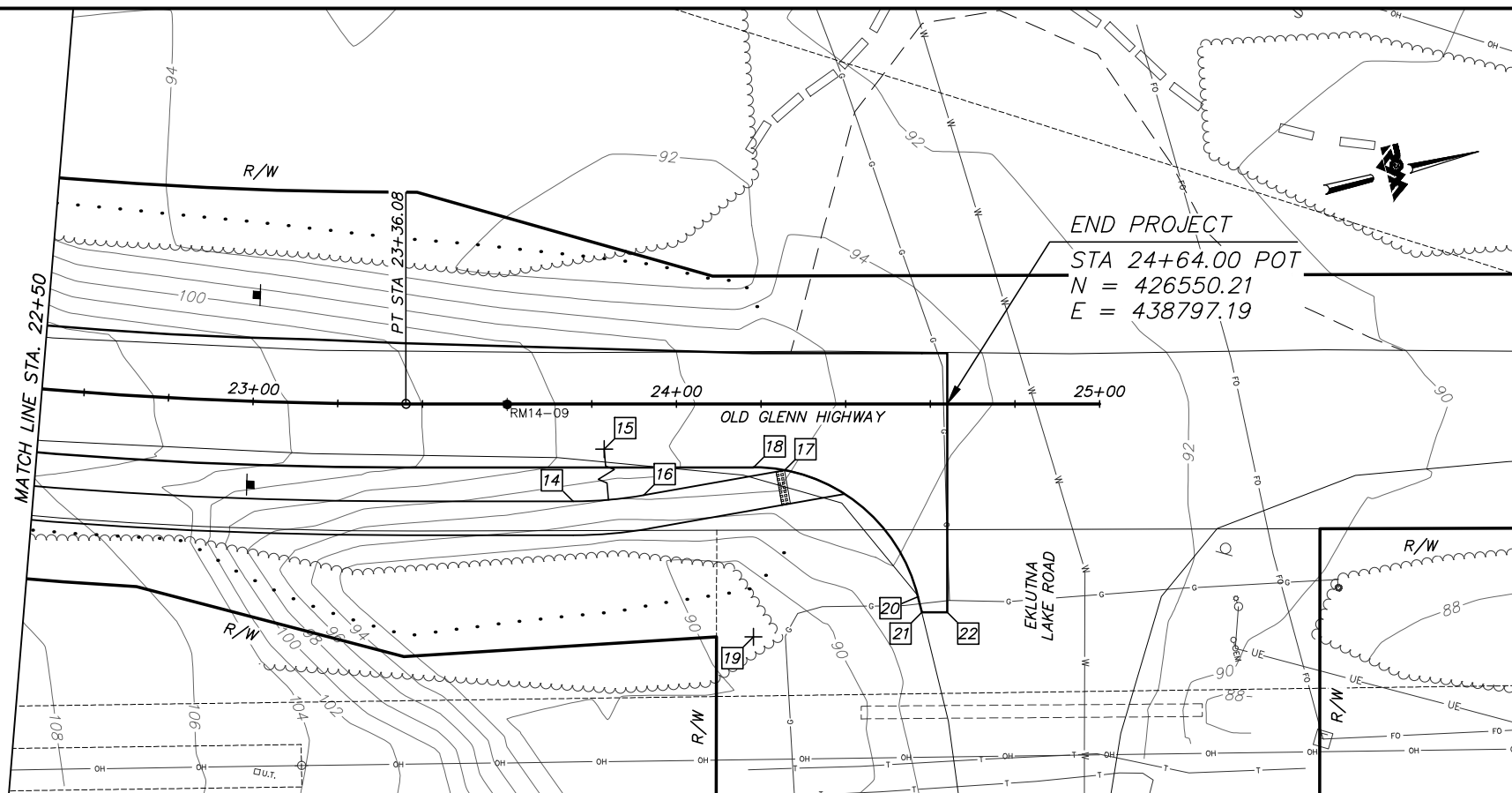
STA 18+00 TO STA 22+50

SCALE H: 1:20 DATE 6/6/14 GRID NW1965 SHEET 13 of 44
V: 1:10 ACCT. NO.



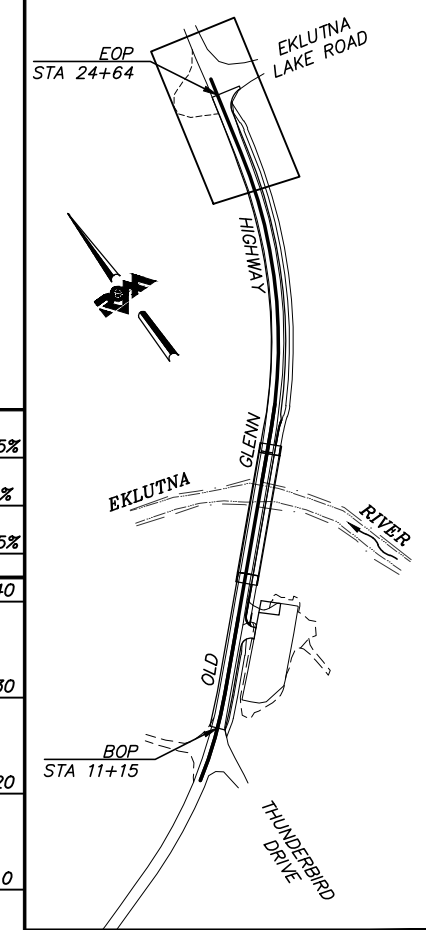
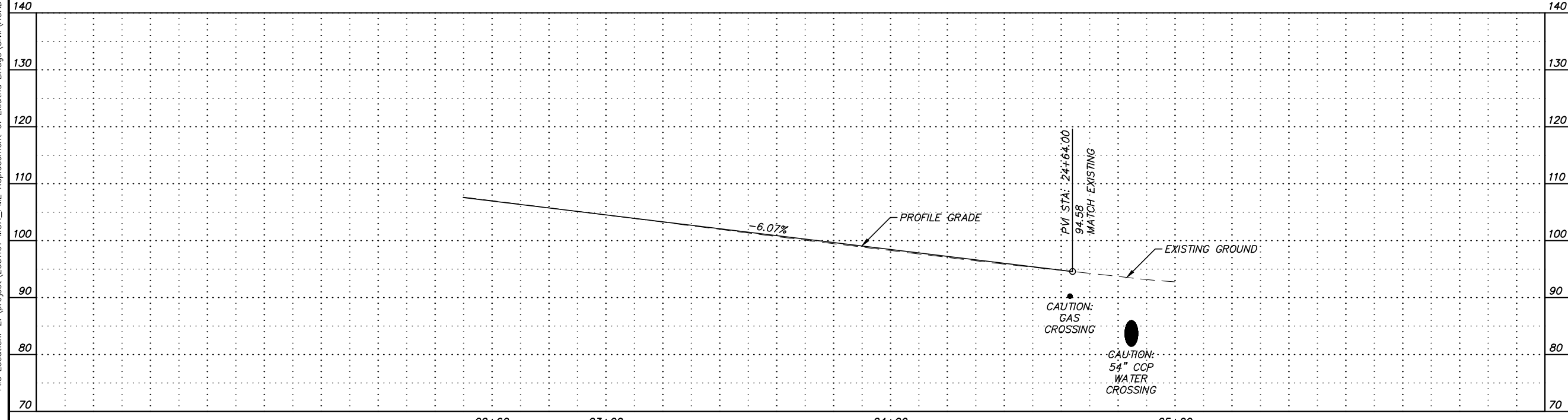
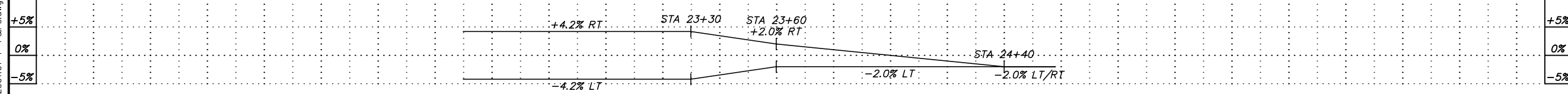
BEFORE YOU DIG
CALL FOR FREE
UNDERGROUND
LOCATION

LOCATE CALL CENTER OF ALASKA
STATEWIDE 800-478-3121 WILL
NOTIFY SUBSCRIBED UTILITIES ONLY.
OTHER UTILITIES NEED TO BE
CONTACTED INDIVIDUALLY.

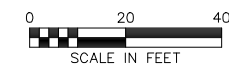


END PROJECT
STA 24+64.00 POT
N = 426550.21
E = 438797.19

#	POINT	STATION	OFFSET	REMARKS
	14	23+75.61	23.00 RT	PATHWAY PC
	15	23+75.61	73.00 LT	PATHWAY RP, R=96'
	16	23+92.28	21.54 RT	PATHWAY PT
	17	24+25.56	15.67 RT	END PATHWAY
	18	24+18.24	15.00 RT	RETURN RADIUS PC
	19	24+18.24	55.00 RT	RETURN RADIUS RP, R=40'
	20	24+57.11	45.54 RT	RETURN RADIUS PT
	21	24+58.00	49.20 RT	MATCH EXISTING
	22	24+64.00	49.20 RT	MATCH EXISTING



65% DESIGN
JUNE 2014



Plotted: 6/6/2014 10:38 AM File Location: Z:\project\2001.01 MOA_PME Replacement of Eklutna Bridge\Civil\ACAD\2001.01-F-P&P.dwg

FIELD BOOKS	BM NO.	LOCATION	ELEV.	DATA	DRAWN BY	CHECKED BY	DATA	DRAWN BY	CHECKED BY	REV	DATE	DESCRIPTION	BY	REV	DATE	DESCRIPTION	BY
DESIGN				BASE			TELEPHONE										
STAKING				TOPOGRAPHY			ELECTRIC										
ASBUILT				PROFILE			CABLE TV										
CONTRACTOR				SANITARY SEWER			DESIGN										
INSPECTOR				STORM SEWER			QUANTITIES										
				WATER			MUN. FINAL CHK.										
				GAS													
CONSTRUCTION RECORD																	

R&M Consultants, Inc.
9101 Vanguard Drive
Anchorage, Alaska 99507
907 522 1707 voice
907 522 3404 fax
www.rmconsult.com



PROJECT MANAGEMENT AND
ENGINEERING DIVISION

12-40
EKLUTNA RIVER BRIDGE REPLACEMENT AT OLD GLENN HWY
THUNDERBIRD DRIVE TO EKLUTNA LAKE ROAD

ROADWAY IMPROVEMENTS

STA 22+50 TO EOP

SCALE H: 1:20 DATE 6/6/14 GRID NW1965 SHEET 14 of 44
V: 1:10 ACCT. NO.