

- NOTES**
1. ORIGINAL FIELD SURVEY WAS PERFORMED BY ASCG INC. FROM NOVEMBER 11, 2004 TO MARCH 28, 2005. THAT SURVEY INFORMATION IS LOCATED IN M.O.A. FIELD BOOK NO. 3308 PAGES 1 THROUGH 74. ADDITIONAL FIELD SURVEY WAS PERFORMED BY R&M CONSULTANTS, INC. FROM SEPTEMBER 9, 2013 TO NOVEMBER 8, 2013. FIELD SURVEY INFORMATION FOR THIS PROJECT IS LOCATED IN R&M FIELD BOOK NO. 2001.01, PAGES 1 THROUGH 58.
 2. THIS PROJECT IS LOCATED ENTIRELY WITHIN THE ANCHORAGE BOWL 2000 ADJUSTMENT, A LOCAL SURFACE GRID COORDINATE SYSTEM EXPRESSED IN U.S. SURVEY FEET UNITS DEVELOPED BY THE ALASKA DEPARTMENT OF TRANSPORTATION.
 3. THE BASIS OF COORDINATES IS NGS STATION O'MALLEY, LOCATED NEAR THE INTERSECTION OF THE NEW SEWARD HIGHWAY AND O'MALLEY ROAD. SAID STATION HAS ANCHORAGE BOWL 2000 COORDINATES OF 303939.2310 N, 353362.5446 E. (U.S. SURVEY FEET).
 4. THE BASIS OF BEARINGS IS A LOCAL PLANE BEARING BETWEEN NGS STATION O'MALLEY AND NGS STATION LOOP 2 USE RM 3 1964. NGS STATION LOOP 2 USE RM 3 1964 BEARS N 01°43'26.4" E A DISTANCE OF 49488.4476 FEET FROM NGS STATION O'MALLEY. NGS STATION LOOP 2 USE RM 3 1964 HAS ANCHORAGE BOWL 2000 COORDINATES OF 353405.2778 N, 354851.3982 E. (U.S. SURVEY FEET).
 5. TO CONVERT THE LOCAL COORDINATES TO NAD83 (92) STATE PLANE COORDINATES EXPRESSED IN U.S. SURVEY FEET, TRANSLATE USING +2,296,868.6878 N, +1,312,517.4904 E, AND SCALE USING 0.9998910192.
 6. EASEMENTS OF RECORD OTHER THAN THOSE SHOWN ON FIRST AMERICAN 1ST AMENDMENT TO COMMITMENT FOR TITLE INSURANCE NO. 0209-2177018, DATED APRIL 30, 2014, AND THE RECORDED PLATS, ARE NOT SHOWN HEREON.
 7. ALL DISTURBED PROPERTY CORNERS SHALL BE REPLACED BY THE CONTRACTOR IN ACCORDANCE WITH THE M.O.A. STANDARD SPECIFICATIONS, SECTION 65.02 CONSTRUCTION SURVEYING, ARTICLE 2.1 PROJECT CONTROL.
 8. THE RIGHT OF WAY LINE ALONG THE OLD GLENN HIGHWAY IS RECORDED AS A PUBLIC USE EASEMENT IN BOOK 1319 ON PAGE 711 ANCHORAGE RECORDING DISTRICT. THE RIGHT OF WAY LINE ALONG THE EKLUTNA LAKE ROAD IS RECORDED AS A PUBLIC USE EASEMENT IN BOOK 1648 PAGE 899 ANCHORAGE RECORDING DISTRICT.

LEGEND

	FOUND BLM MONUMENT
	FOUND BRASS CAP MONUMENT
	FOUND 5/8" REBAR

FIELD BOOKS	BM NO.	LOCATION	ELEV.	DATA	DRAWN BY	CHECKED BY	DATA	DRAWN BY	CHECKED BY	REV	DATE	DESCRIPTION	BY
DESIGN: Book 2001.01, Pages 1 - 58				BASE	GMM	GEL	TELEPHONE						
				TOPOGRAPHY			ELECTRIC						
				PROFILE			CABLE TV						
				SANITARY SEWER			TRAFFIC SIGNAL						
				STORM SEWER			DESIGN						
				WATER			QUANTITIES						
				GAS			MUN. FINAL CHECK						
CONSTRUCTION RECORD		VERTICAL DATUM		PLAN CHECK								REVISIONS	

R & M Consultants, Inc.
9101 Vanguard Drive
Anchorage, Alaska 99507
907 522 1707 voice
907 522 3404 fax
www.rmconsult.com



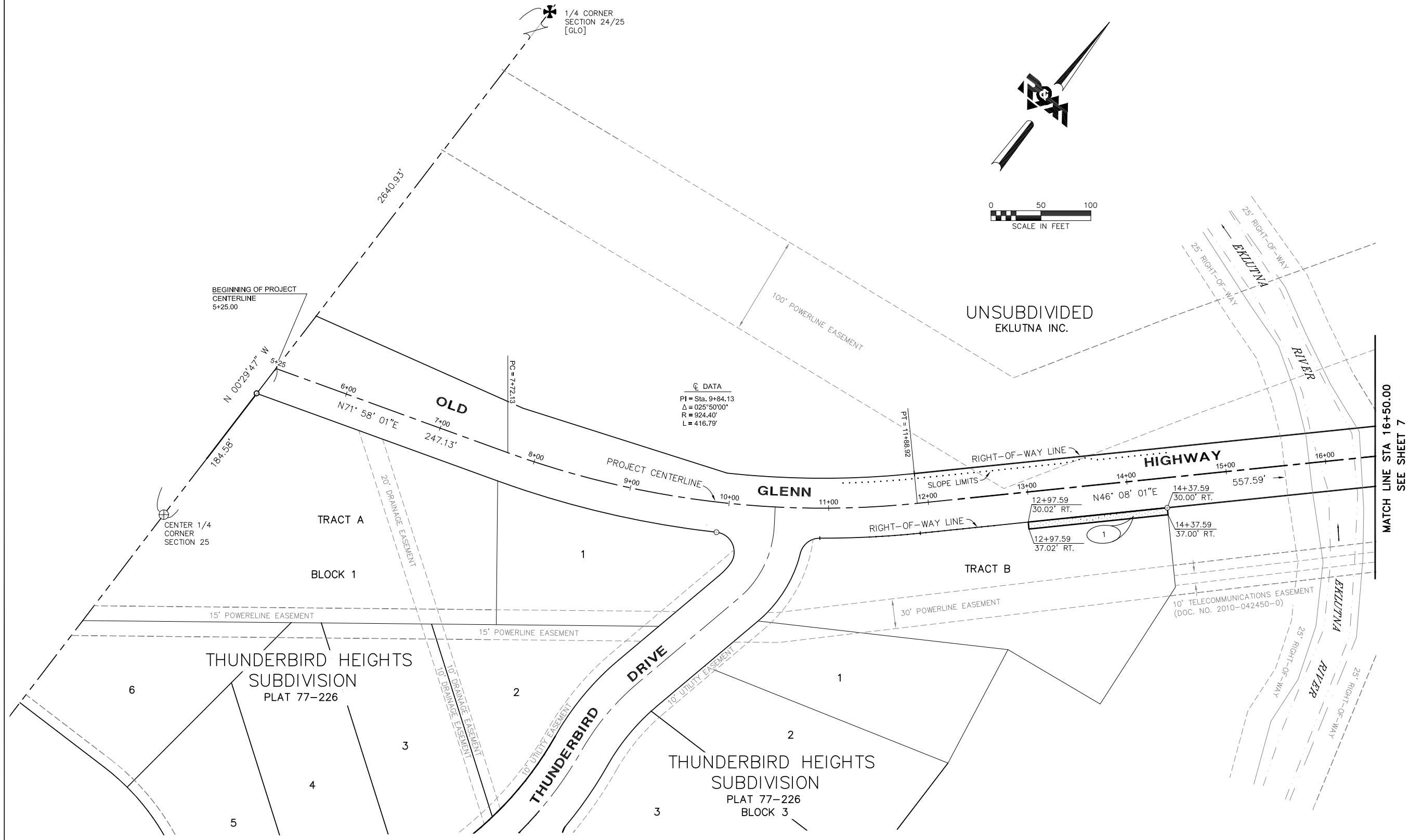
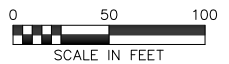
PROJECT MANAGEMENT AND ENGINEERING DIVISION

12-40
EKLUTNA RIVER BRIDGE REPLACEMENT AT OLD GLENN HWY THUNDERBIRD DRIVE TO EKLUTNA LAKE ROAD

RIGHT-OF-WAY MAP

SCALE: 1"=200' DATE 5/20/2014 GRID NW1965 SHEET 5 of ?
ACCT. NO.

1/4 CORNER SECTION 24/25 [GLO]



DATA
 PI = Sta. 9+84.13
 Δ = 025°50'00"
 R = 924.40'
 L = 416.79'

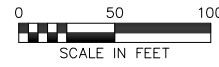
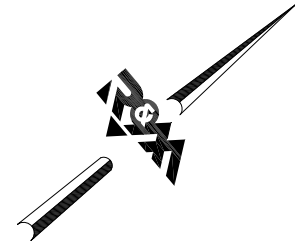
PARCEL INFORMATION					
PARCEL NO.	LEGAL DESCRIPTION	OWNER	INTEREST TO BE ACQUIRED	NET TAKE	EASEMENT RECORDING DATA
1	TRACT B, BLOCK 3, THUNDERBIRD HEIGHTS SUBD., PLAT NO. 77-226	STATE OF ALASKA, DNR	PERMIT	980 SQ. FT.	

FIELD BOOKS	BM NO.	LOCATION	ELEV.	DATA	DRAWN BY	CHECKED BY	DATA	DRAWN BY	CHECKED BY	REV	DATE	DESCRIPTION	BY
DESIGN: Book 2001.01, Pages 1 - 58				BASE	GMM	GEL	TELEPHONE						
				TOPOGRAPHY			ELECTRIC						
				PROFILE			CABLE TV						
				SANITARY SEWER			TRAFFIC SIGNAL						
				STORM SEWER			DESIGN						
				WATER			QUANTITIES						
				GAS			MUN. FINAL CHECK						

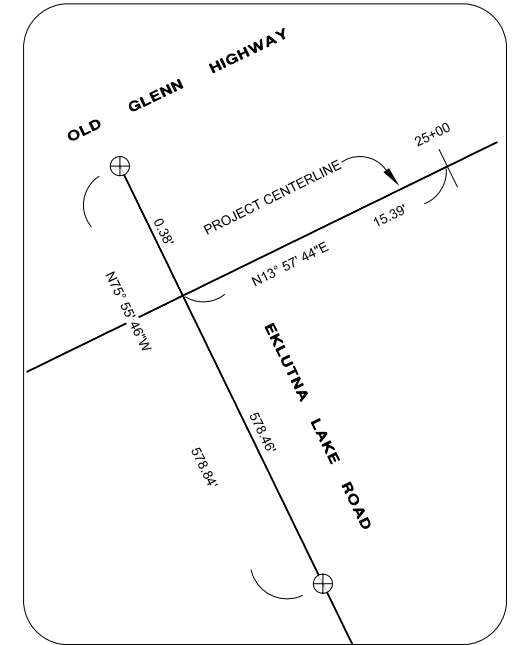
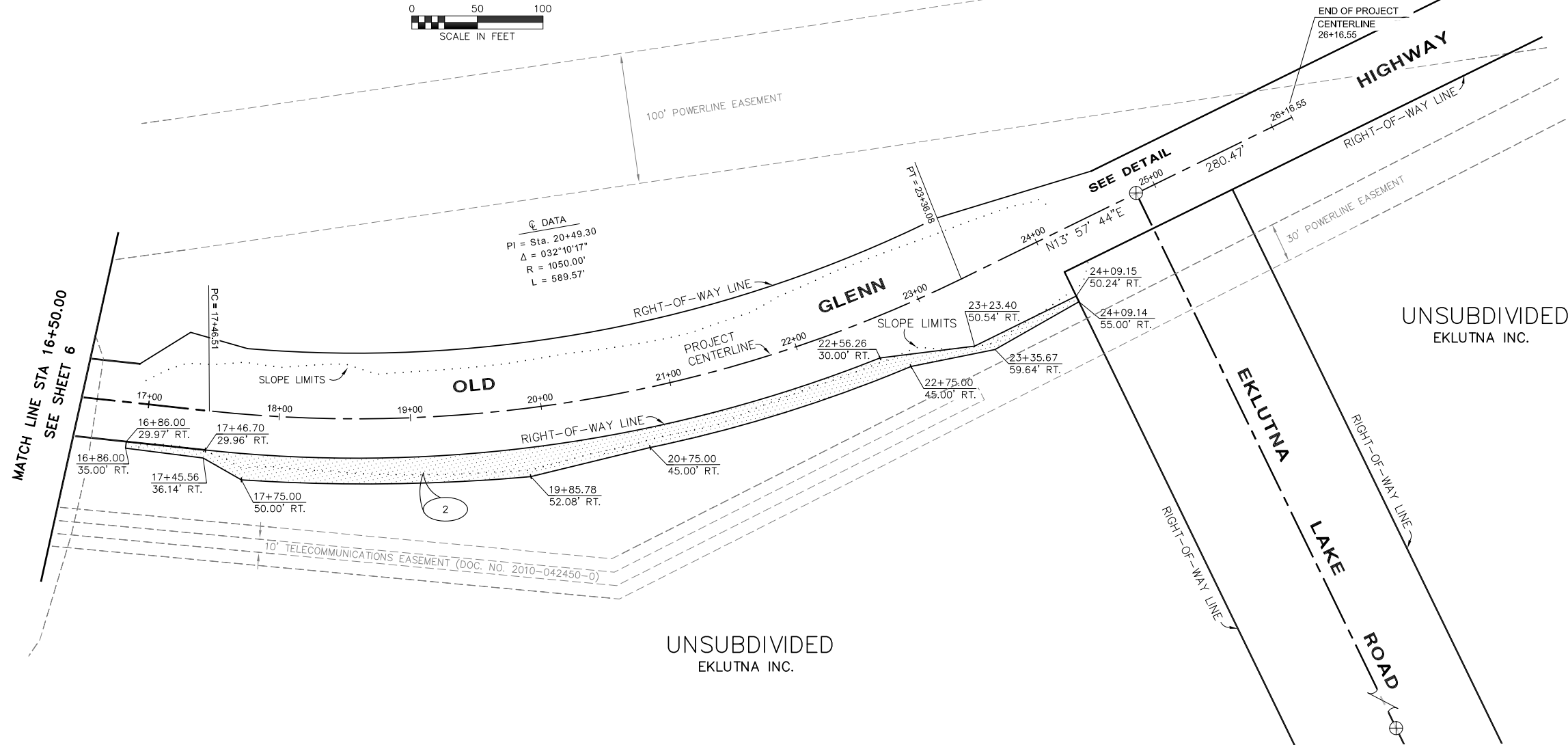
R & M Consultants, Inc.
 9101 Vanguard Drive
 Anchorage, Alaska 99507
 907 522 1707 voice
 907 522 3404 fax
 www.rmconsult.com



PROJECT MANAGEMENT AND ENGINEERING DIVISION
 12-40
 EKLUTNA RIVER BRIDGE REPLACEMENT AT OLD GLENN HWY THUNDERBIRD DRIVE TO EKLUTNA LAKE ROAD
RIGHT-OF-WAY MAP
 SCALE: 1"=50' DATE 5/20/2014 GRID NW1965 SHEET 6 of 9
 ACCT. NO.



UNSUBDIVIDED
EKLUTNA INC.



DETAIL
NOT TO SCALE

UNSUBDIVIDED
EKLUTNA INC.

UNSUBDIVIDED
EKLUTNA INC.

PARCEL INFORMATION

PARCEL NO.	LEGAL DESCRIPTION	OWNER	INTEREST TO BE ACQUIRED	NET TAKE	EASEMENT RECORDING DATA
2	PORTION OF THE NE 1/4, SECTION 25, T16N, R1W, S.M., ALASKA	EKLUTNA INC.	PUBLIC USE EASEMENT	10,870 SQ. FT.	

FIELD BOOKS	BM NO.	LOCATION	ELEV.	DATA	DRAWN BY	CHECKED BY	DATA	DRAWN BY	CHECKED BY	REV	DATE	DESCRIPTION	BY
DESIGN: Book 2001.01, Pages 1 - 58				BASE	GMM	GEL	TELEPHONE						
				TOPOGRAPHY			ELECTRIC						
				PROFILE			CABLE TV						
				SANITARY SEWER			TRAFFIC SIGNAL						
ASBUILT:				STORM SEWER			DESIGN						
CONTRACTOR:				WATER			QUANTITIES						
INSPECTOR:				GAS			MUN. FINAL CHECK						
CONSTRUCTION RECORD		VERTICAL DATUM					PLAN CHECK					REVISIONS	

R & M Consultants, Inc.
9101 Vanguard Drive
Anchorage, Alaska 99507
907 522 1707 voice
907 522 3404 fax
www.rmconsult.com



PROJECT MANAGEMENT AND
ENGINEERING DIVISION

12-40
EKLUTNA RIVER BRIDGE REPLACEMENT AT OLD GLENN HWY
THUNDERBIRD DRIVE TO EKLUTNA LAKE ROAD

RIGHT-OF-WAY MAP

SCALE: 1"=50' DATE 5/20/2014 GRID NW1965 SHEET 7 of ?
ACCT. NO.