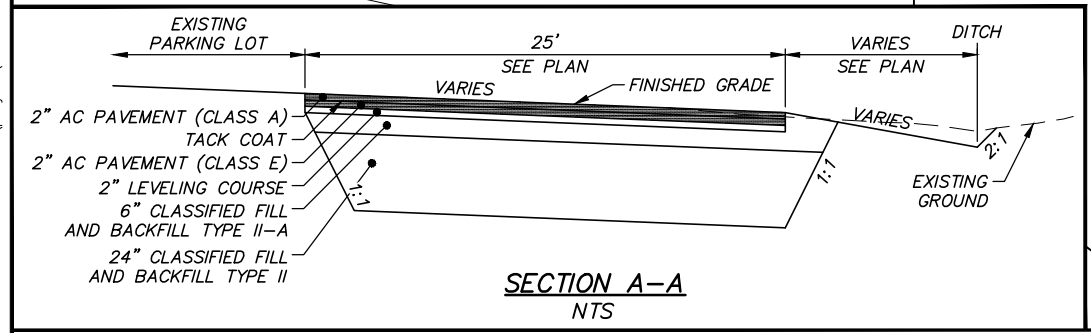
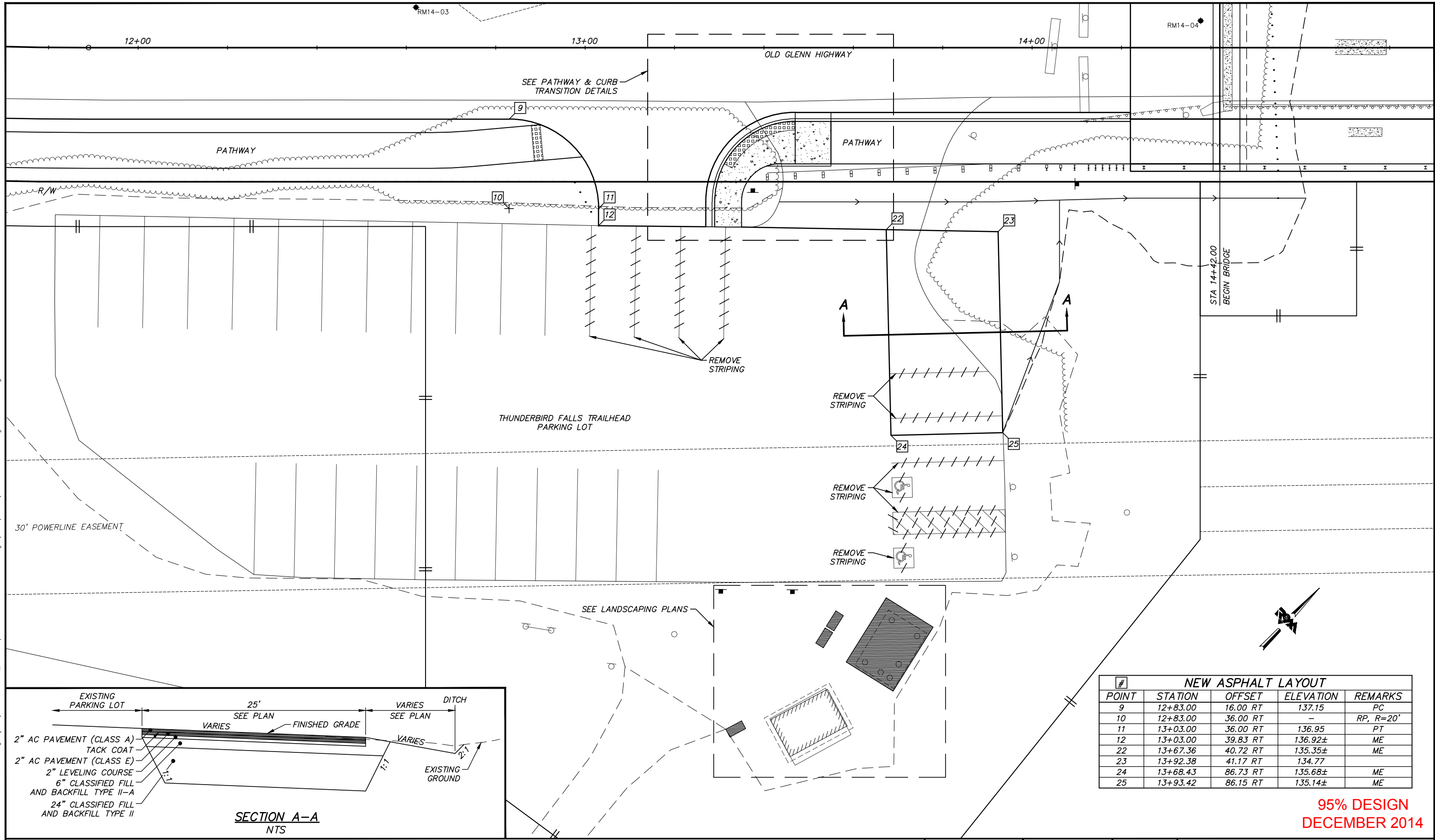


Plotted: 12/23/2014 9:40 AM File Location: Z:\project\2001.01 MOA_PME Replacement of Eklutna Bridge\Civil\ACAD\2001.01-G-Grading & Details.dwg



| NEW ASPHALT LAYOUT | | | | |
|--------------------|----------|----------|-----------|-----------|
| # | STATION | OFFSET | ELEVATION | REMARKS |
| 9 | 12+83.00 | 16.00 RT | 137.15 | PC |
| 10 | 12+83.00 | 36.00 RT | - | RP, R=20' |
| 11 | 13+03.00 | 36.00 RT | 136.95 | PT |
| 12 | 13+03.00 | 39.83 RT | 136.92± | ME |
| 22 | 13+67.36 | 40.72 RT | 135.35± | ME |
| 23 | 13+92.38 | 41.17 RT | 134.77 | |
| 24 | 13+68.43 | 86.73 RT | 135.68± | ME |
| 25 | 13+93.42 | 86.15 RT | 135.14± | ME |

**95% DESIGN
DECEMBER 2014**

| FIELD BOOKS | BM NO. | LOCATION | ELEV. | DATA | DRAWN BY | CHECKED BY | DATA | DRAWN BY | CHECKED BY | REV | DATE | DESCRIPTION | BY | REV | DATE | DESCRIPTION | BY | |
|---------------------|--------|----------------|-------|----------------|----------|------------|-----------------|----------|------------|-----|------|-------------|----|-----|------|-------------|----|--|
| DESIGN | | | | BASE | | | TELEPHONE | | | | | | | | | | | |
| STAKING | | | | TOPOGRAPHY | | | ELECTRIC | | | | | | | | | | | |
| ASBUILT | | | | PROFILE | | | CABLE TV | | | | | | | | | | | |
| CONTRACTOR | | | | SANITARY SEWER | | | DESIGN | | | | | | | | | | | |
| INSPECTOR | | | | STORM SEWER | | | QUANTITIES | | | | | | | | | | | |
| | | | | WATER | | | MUN. FINAL CHK. | | | | | | | | | | | |
| | | | | GAS | | | | | | | | | | | | | | |
| CONSTRUCTION RECORD | | VERTICAL DATUM | | PLAN CHECK | | | REVISIONS | | | | | | | | | | | |

R&M Consultants, Inc.
9101 Vanguard Drive
Anchorage, Alaska 99507
907 522 1707 voice
907 522 3404 fax
www.rmconsult.com



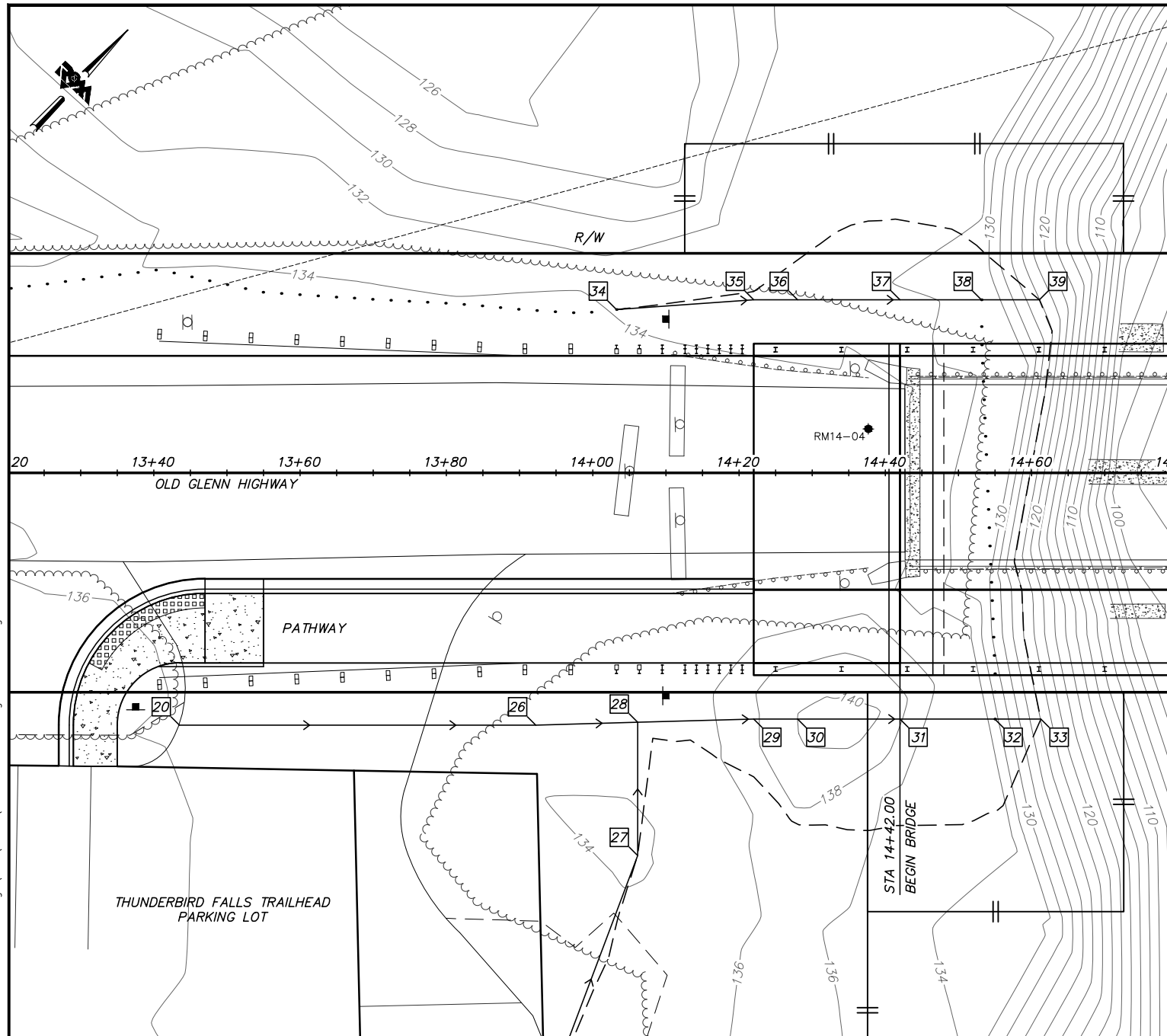
PROJECT MANAGEMENT AND ENGINEERING DIVISION

12-40
EKLUTNA RIVER BRIDGE REPLACEMENT AT OLD GLENN HWY
THUNDERBIRD DRIVE TO EKLUTNA LAKE ROAD
**THUNDERBIRD FALLS TRAILHEAD
PARKING LOT GRADING PLAN**

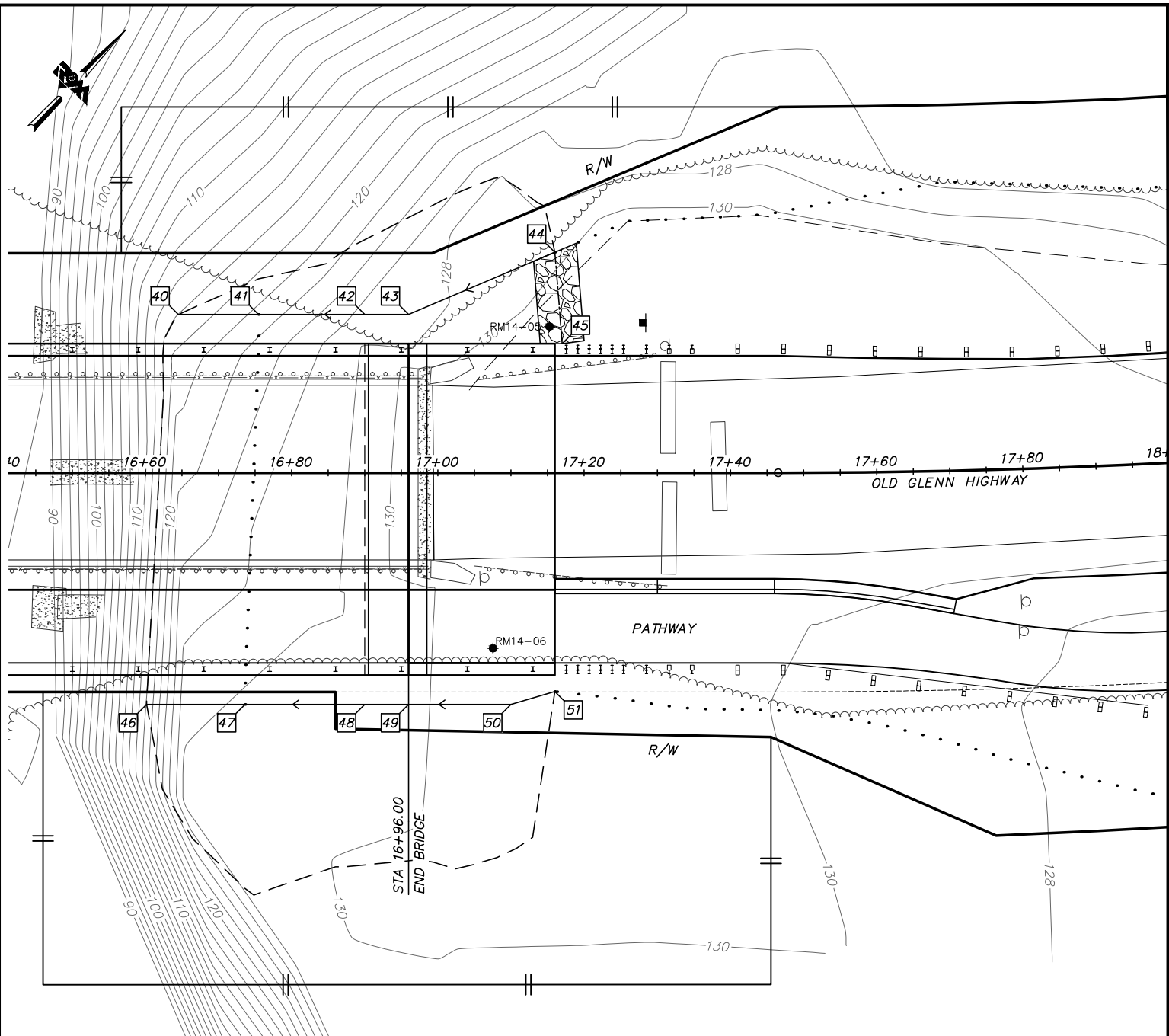
SCALE 1:10 DATE 12/23/14 GRID NW1965 SHEET 17 of 45
ACCT. NO.

File Location: Z:\project\2001.01 MOA_PME Replacement of Eklutna Bridge\Civil\ACAD\2001.01-G-Grading & Details.dwg

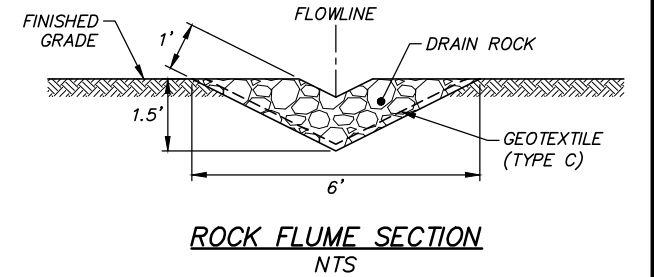
Plotted: 12/23/2014 9:41 AM



| # | POINT | STATION | OFFSET | ELEVATION | REMARKS |
|---|-------|----------|----------|-----------|-----------------|
| | 20 | 13+43.50 | 34.50 RT | 136.21 | DITCH |
| | 25 | 13+93.42 | 86.15 RT | 135.14± | ME, BEGIN DITCH |
| | 26 | 13+92.23 | 34.50 RT | 133.94 | DITCH |
| | 27 | 14+06.14 | 52.34 RT | 133.71± | ME, DITCH |
| | 28 | 14+06.14 | 34.11 RT | 133.51 | DITCH |
| | 29 | 14+22.00 | 33.67 RT | 133.02 | DITCH |
| | 30 | 14+28.00 | 33.67 RT | 132.94 | DITCH |
| | 31 | 14+42.00 | 33.67 RT | 124.49 | DITCH |
| | 32 | 14+54.98 | 33.67 RT | 124.00 | DITCH |
| | 33 | 14+61.27 | 33.67 RT | 124.00± | ME, END DITCH |
| | 34 | 14+03.25 | 22.32 LT | 133.94± | ME, BEGIN DITCH |
| | 35 | 14+22.00 | 23.67 LT | 132.67 | DITCH |
| | 36 | 14+28.00 | 23.67 LT | 133.83 | DITCH |
| | 37 | 14+42.00 | 23.67 LT | 128.90 | DITCH |
| | 38 | 14+53.15 | 23.67 LT | 124.00 | DITCH |
| | 39 | 14+61.07 | 23.67 LT | 124.00± | ME, END DITCH |



| # | POINT | STATION | OFFSET | ELEVATION | REMARKS |
|---|-------|----------|----------|-----------|---------------------------------|
| | 40 | 16+64.51 | 21.67 LT | 116.00± | ME, END DITCH |
| | 41 | 16+75.45 | 21.67 LT | 116.00 | DITCH |
| | 42 | 16+90.00 | 21.67 LT | 119.73 | DITCH |
| | 43 | 16+96.00 | 21.67 LT | 121.27 | DITCH |
| | 44 | 17+16.00 | 30.15 LT | 129.61± | ME, BEGIN DITCH, END ROCK FLUME |
| | 45 | 17+17.00 | 17.67 LT | 130.83 | BEGIN ROCK FLUME |
| | 46 | 16+60.16 | 31.67 RT | 116.00± | ME, END DITCH |
| | 47 | 16+73.62 | 31.67 RT | 116.00 | DITCH |
| | 48 | 16+90.00 | 31.67 RT | 120.53 | DITCH |
| | 49 | 16+96.00 | 31.67 RT | 122.19 | DITCH |
| | 50 | 17+10.00 | 31.67 RT | 130.28 | DITCH |
| | 51 | 17+16.00 | 29.90 RT | 131.08± | ME, BEGIN DITCH |



95% DESIGN
DECEMBER 2014

| FIELD BOOKS | BM NO. | LOCATION | ELEV. | DATA | DRAWN BY | CHECKED BY | DATA | DRAWN BY | CHECKED BY | REV | DATE | DESCRIPTION | BY | REV | DATE | DESCRIPTION | BY | |
|---------------------|--------|----------|-------|----------------|----------|------------|-----------------|----------|------------|-----|------|-------------|----|-----|------|-------------|----|--|
| DESIGN | | | | BASE | | | TELEPHONE | | | | | | | | | | | |
| STAKING | | | | TOPOGRAPHY | | | ELECTRIC | | | | | | | | | | | |
| ASBUILT | | | | PROFILE | | | CABLE TV | | | | | | | | | | | |
| CONTRACTOR | | | | SANITARY SEWER | | | DESIGN | | | | | | | | | | | |
| INSPECTOR | | | | STORM SEWER | | | QUANTITIES | | | | | | | | | | | |
| CONSTRUCTION RECORD | | | | WATER | | | MUN. FINAL CHK. | | | | | | | | | | | |
| | | | | GAS | | | | | | | | | | | | | | |
| | | | | PLAN CHECK | | | | | | | | | | | | | | |
| | | | | REVISIONS | | | | | | | | | | | | | | |

R&M Consultants, Inc.
9101 Vanguard Drive
Anchorage, Alaska 99507
907 522 1707 voice
907 522 3404 fax
www.rmconsult.com

SEAL



PROJECT MANAGEMENT AND ENGINEERING DIVISION

12-40
EKLUTNA RIVER BRIDGE REPLACEMENT AT OLD GLENN HWY
THUNDERBIRD DRIVE TO EKLUTNA LAKE ROAD

BRIDGE ABUTMENTS GRADING PLAN

SCALE 1:10 DATE 12/23/14 GRID NW1965 SHEET 18 of 45
ACCT. NO.