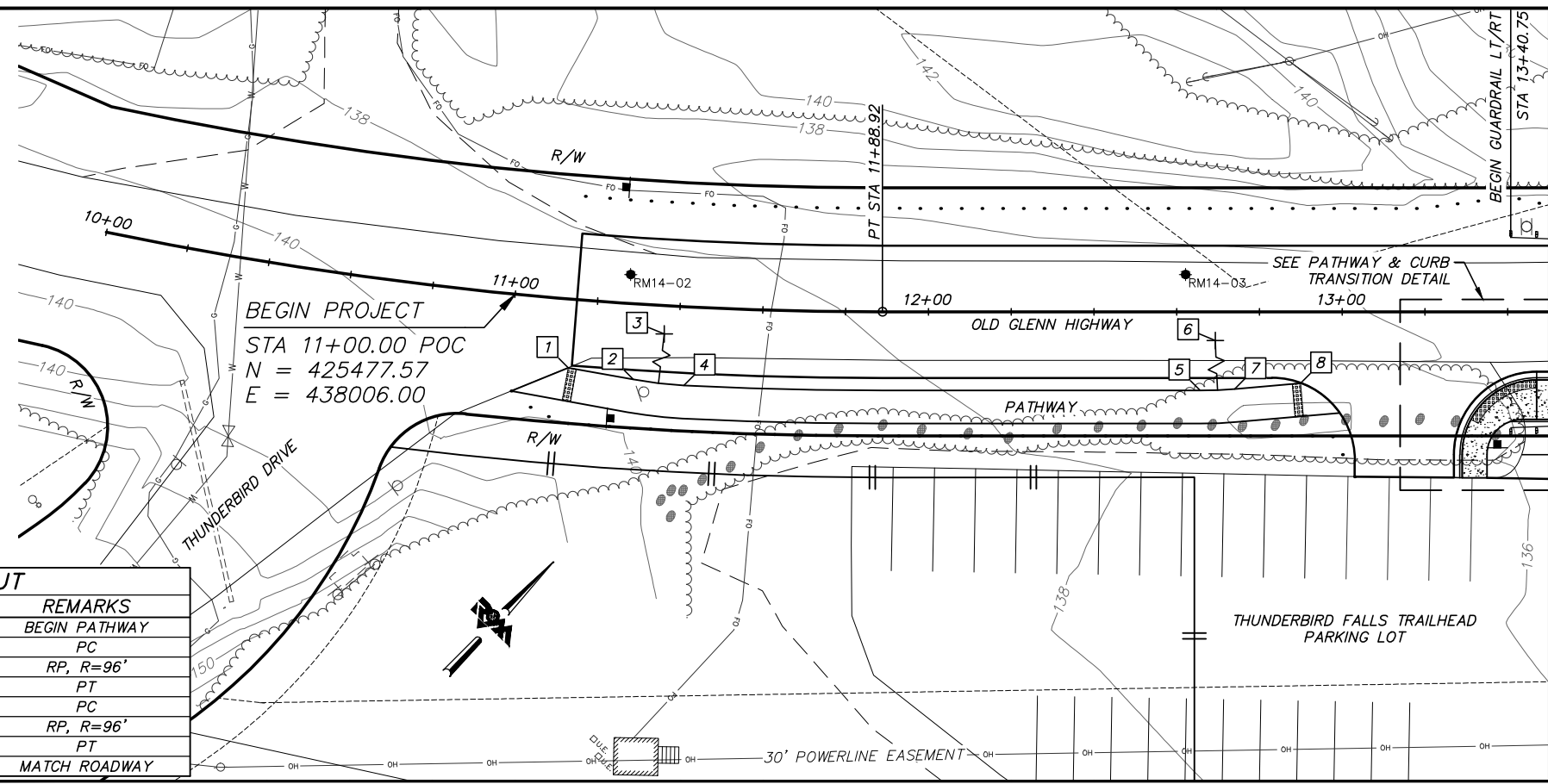
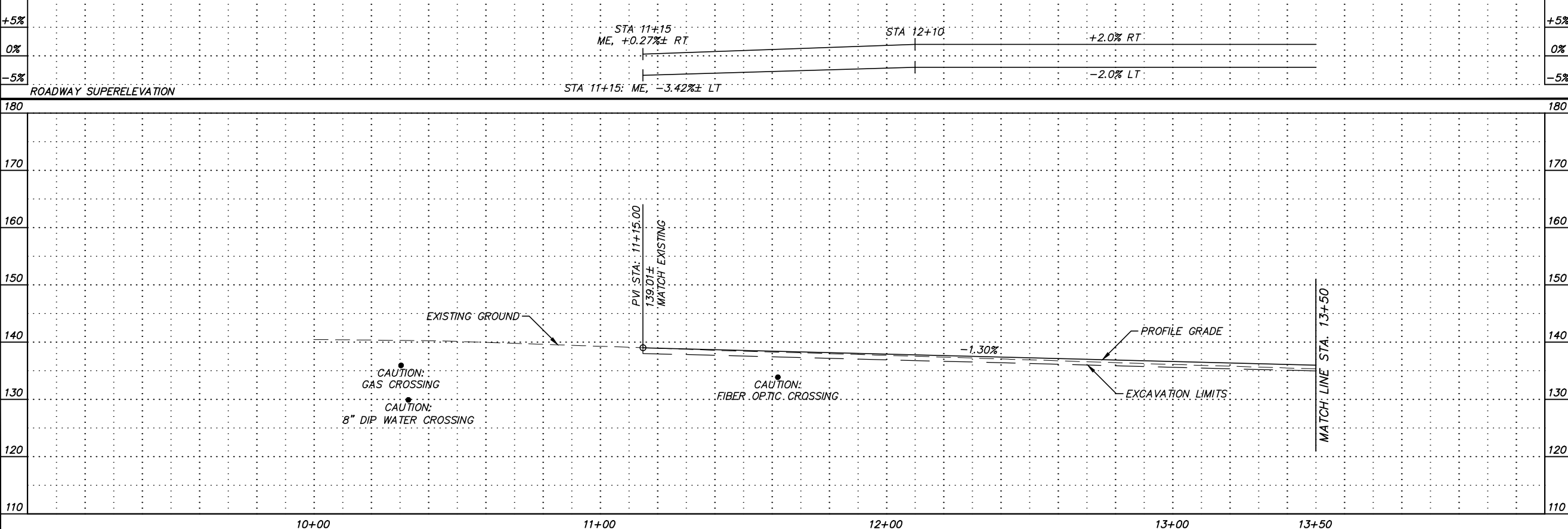


Plotted: 12/23/2014 9:39 AM File Location: Z:\project\2001.01 MOA_PME Replacement of Eklutna Bridge\Civil\ACAD\2001.01-F-P&Ps.dwg

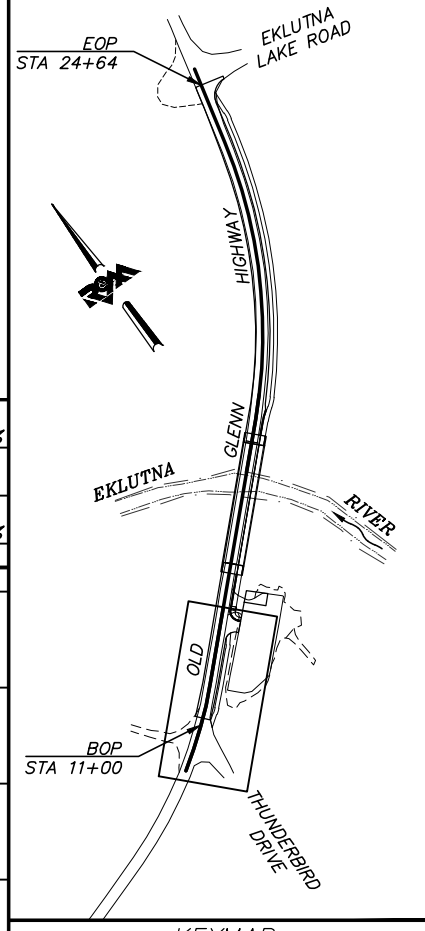


| # | POINT | STATION | OFFSET | REMARKS |
|---|-------|----------|----------|---------------|
| | 1 | 11+14.20 | 16.58 RT | BEGIN PATHWAY |
| | 2 | 11+29.81 | 18.29 RT | PC |
| | 3 | 11+41.87 | 77.00 LT | RP, R=96' |
| | 4 | 11+41.87 | 19.00 RT | PT |
| | 5 | 12+65.69 | 19.00 RT | PC |
| | 6 | 12+65.69 | 77.00 LT | RP, R=96' |
| | 7 | 12+74.06 | 18.63 RT | PT |
| | 8 | 12+89.95 | 17.24 RT | MATCH ROADWAY |

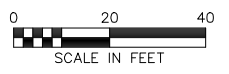


BEFORE YOU DIG
CALL FOR FREE
UNDERGROUND
LOCATION

LOCATE CALL CENTER OF ALASKA
STATEWIDE 800-478-3121 WILL
NOTIFY SUBSCRIBED UTILITIES ONLY.
OTHER UTILITIES NEED TO BE
CONTACTED INDIVIDUALLY.



**95% DESIGN
DECEMBER 2014**



| FIELD BOOKS | BM NO. | LOCATION | ELEV. | DATA | DRAWN BY | CHECKED BY | DATA | DRAWN BY | CHECKED BY | REV | DATE | DESCRIPTION | BY | REV | DATE | DESCRIPTION | BY |
|---------------------|--------|----------|-------|----------------|----------|------------|-----------------|----------|------------|-----|------|-------------|----|-----|------|-------------|----|
| DESIGN | | | | BASE | | | TELEPHONE | | | | | | | | | | |
| STAKING | | | | TOPOGRAPHY | | | ELECTRIC | | | | | | | | | | |
| ASBUILT | | | | PROFILE | | | CABLE TV | | | | | | | | | | |
| CONTRACTOR | | | | SANITARY SEWER | | | DESIGN | | | | | | | | | | |
| INSPECTOR | | | | STORM SEWER | | | QUANTITIES | | | | | | | | | | |
| CONSTRUCTION RECORD | | | | WATER | | | MUN. FINAL CHK. | | | | | | | | | | |
| | | | | GAS | | | | | | | | | | | | | |
| | | | | | | | | | | | | | | | | | |

R&M Consultants, Inc.
9101 Vanguard Drive
Anchorage, Alaska 99507
907 522 1707 voice
907 522 3404 fax
www.rmconsult.com



PROJECT MANAGEMENT AND
ENGINEERING DIVISION

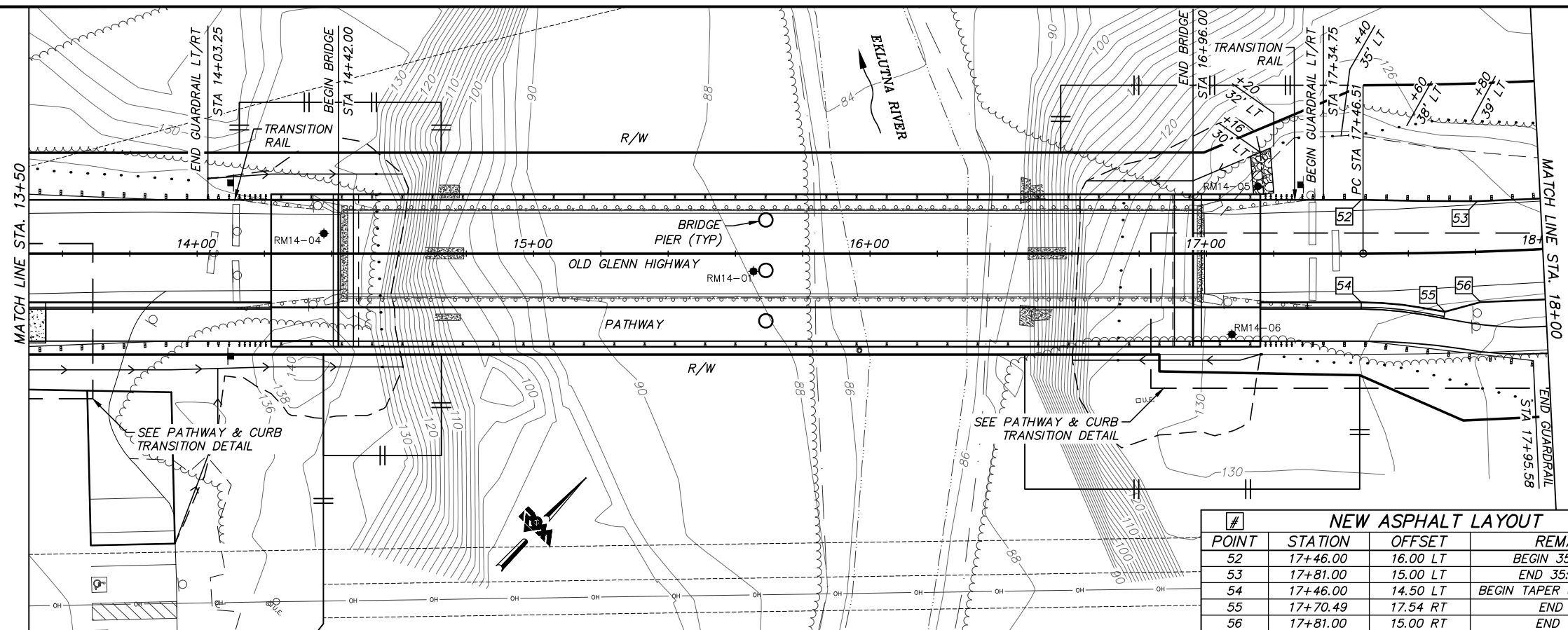
12-40
EKLUTNA RIVER BRIDGE REPLACEMENT AT OLD GLENN HWY
THUNDERBIRD DRIVE TO EKLUTNA LAKE ROAD

ROADWAY IMPROVEMENTS

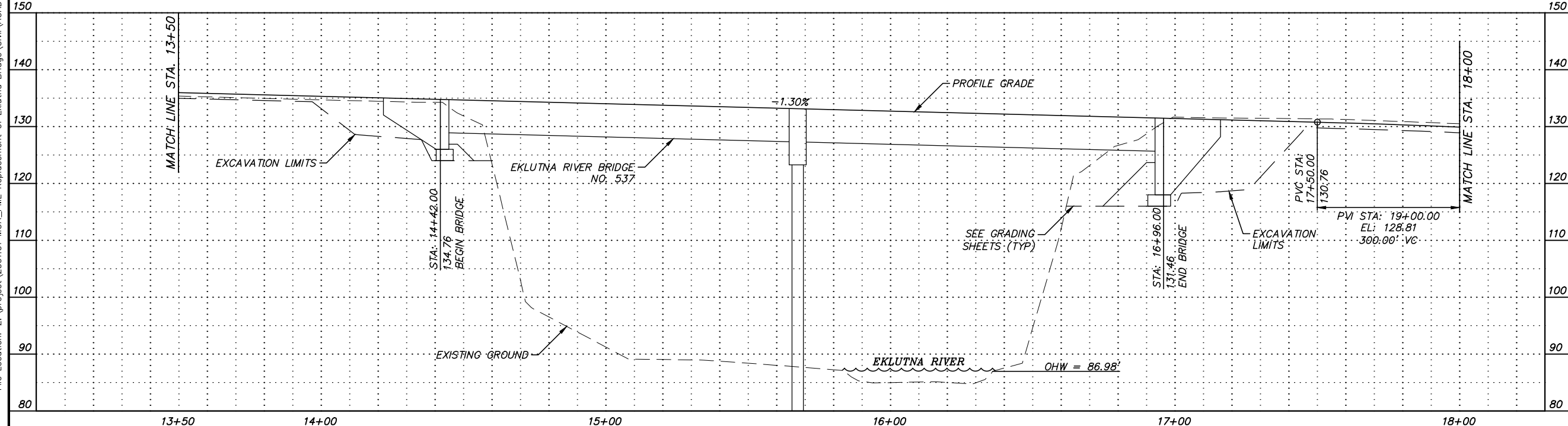
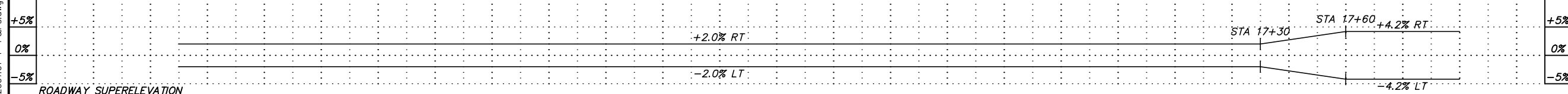
BOP TO STA 13+50

SCALE H: 1:20 DATE 12/23/14 GRID NW1965 SHEET 13 of 45
V: 1:10 ACCT. NO.

Plotted: 12/23/2014 9:39 AM File Location: Z:\project\2001.01 MOA_PME Replacement of Eklutna Bridge\Civil\ACAD\2001.01-F-P&P.s.dwg

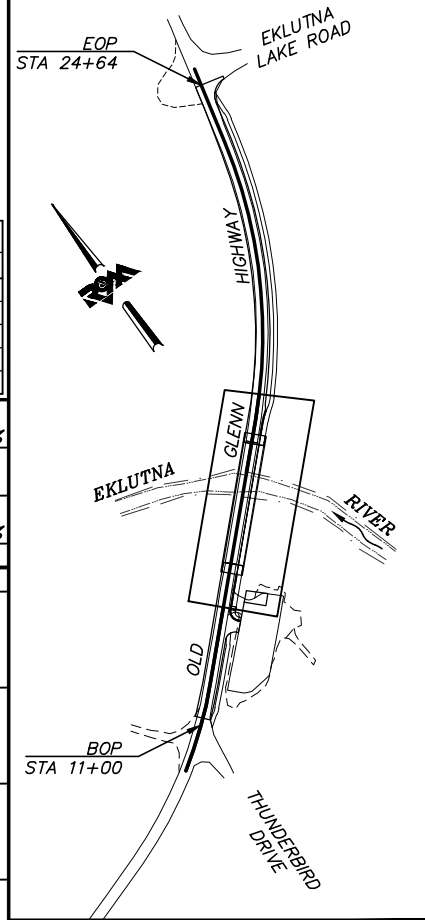


| NEW ASPHALT LAYOUT | | | |
|--------------------|----------|----------|---------------------------|
| POINT | STATION | OFFSET | REMARKS |
| 52 | 17+46.00 | 16.00 LT | BEGIN 35:1 TAPER |
| 53 | 17+81.00 | 15.00 LT | END 35:1 TAPER |
| 54 | 17+46.00 | 14.50 LT | BEGIN TAPER (FOLLOW CURB) |
| 55 | 17+70.49 | 17.54 RT | END CURB |
| 56 | 17+81.00 | 15.00 RT | END TAPER |



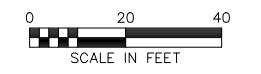
**BEFORE YOU DIG
CALL FOR FREE
UNDERGROUND
LOCATION**

LOCATE CALL CENTER OF ALASKA
STATEWIDE 800-478-3121 WILL
NOTIFY SUBSCRIBED UTILITIES ONLY.
OTHER UTILITIES NEED TO BE
CONTACTED INDIVIDUALLY.



KEYMAP

**95% DESIGN
DECEMBER 2014**



| FIELD BOOKS | BM NO. | LOCATION | ELEV. | DATA | DRAWN BY | CHECKED BY | DATA | DRAWN BY | CHECKED BY | REV | DATE | DESCRIPTION | BY | REV | DATE | DESCRIPTION | BY | |
|---------------------|--------|----------|-------|----------------|----------|------------|-----------------|----------|------------|-----|------|-------------|----|-----|------|-------------|----|--|
| DESIGN | | | | BASE | | | TELEPHONE | | | | | | | | | | | |
| STAKING | | | | TOPOGRAPHY | | | ELECTRIC | | | | | | | | | | | |
| ASBULT | | | | PROFILE | | | CABLE TV | | | | | | | | | | | |
| CONTRACTOR | | | | SANITARY SEWER | | | DESIGN | | | | | | | | | | | |
| INSPECTOR | | | | STORM SEWER | | | QUANTITIES | | | | | | | | | | | |
| | | | | WATER | | | MUN. FINAL CHK. | | | | | | | | | | | |
| | | | | GAS | | | | | | | | | | | | | | |
| CONSTRUCTION RECORD | | | | PLAN CHECK | | | | | | | | | | | | | | |

R&M
R&M Consultants, Inc.
9101 Vanguard Drive
Anchorage, Alaska 99507
907 522 1707 voice
907 522 3404 fax
www.rmconsult.com



**PROJECT MANAGEMENT AND
ENGINEERING DIVISION**

12-40
EKLUTNA RIVER BRIDGE REPLACEMENT AT OLD GLENN HWY
THUNDERBIRD DRIVE TO EKLUTNA LAKE ROAD

ROADWAY IMPROVEMENTS

STA 13+50 TO 18+00

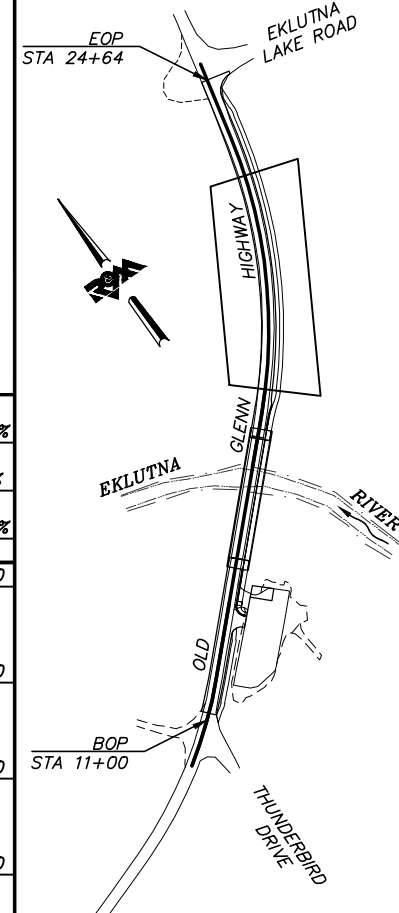
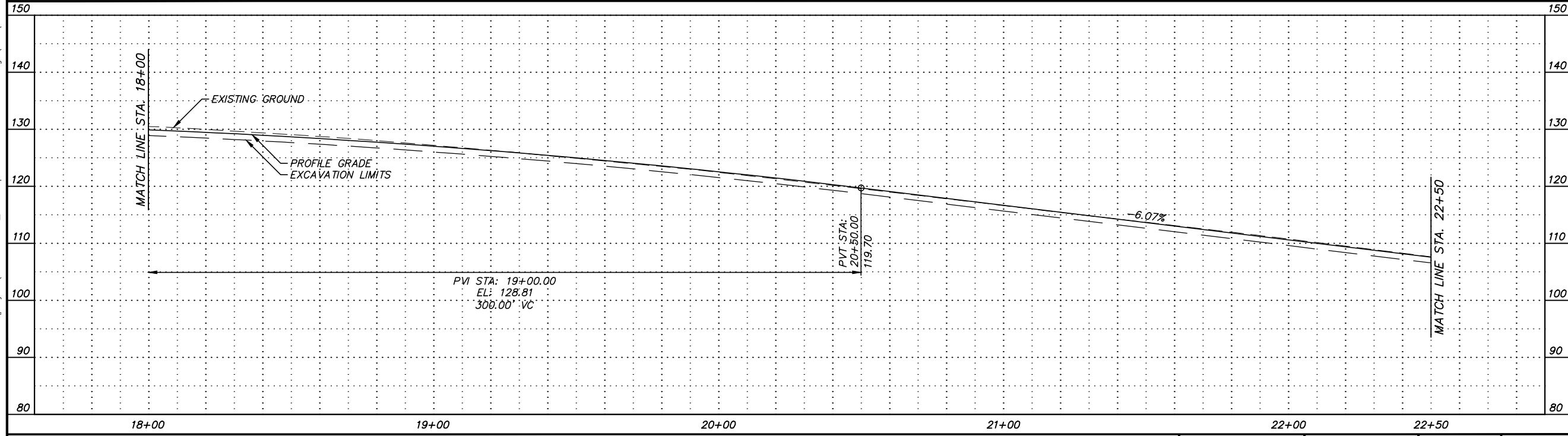
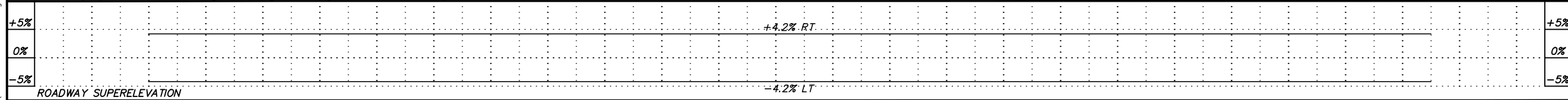
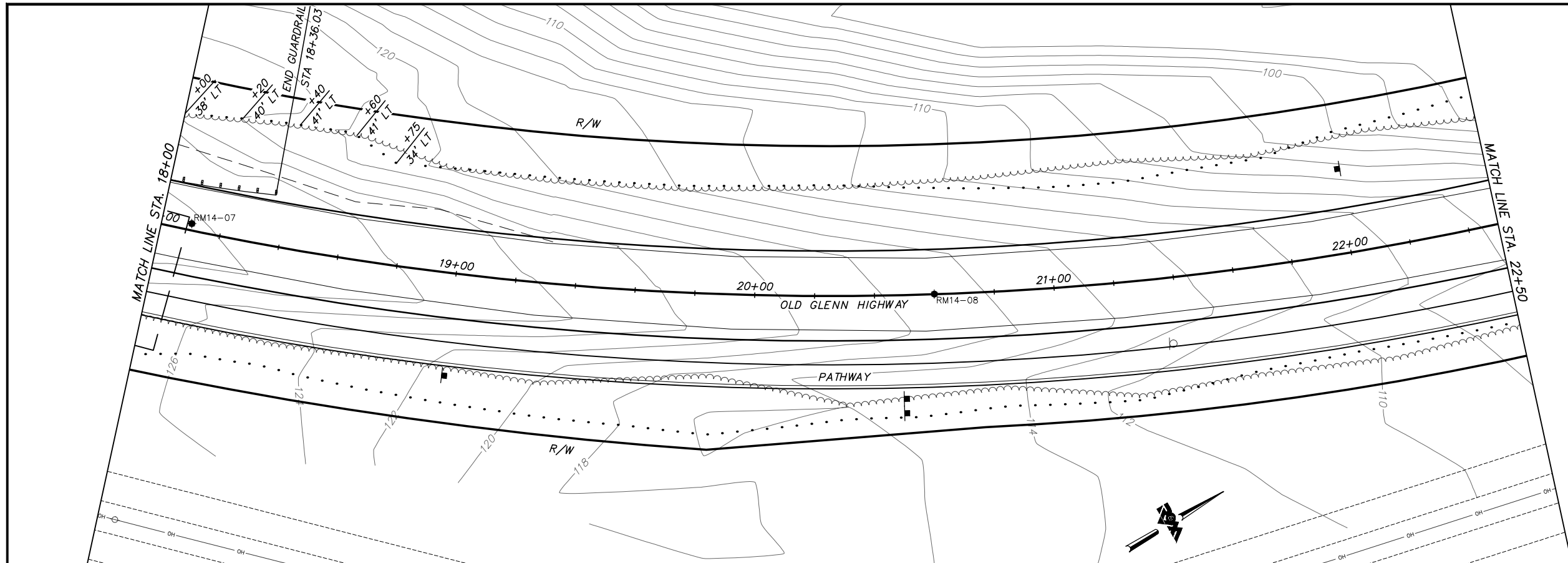
SCALE H: 1:20 DATE 12/23/14 GRID NW1965 SHEET 14 of 45
V: 1:10 ACCT. NO.

Plotted: 12/23/2014 9:40 AM File Location: Z:\project\2001.01 MOA_PME Replacement of Eklutna Bridge\Civil\ACAD\2001.01-F-P&Ps.dwg



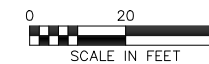
**BEFORE YOU DIG
CALL FOR FREE
UNDERGROUND
LOCATION**

LOCATE CALL CENTER OF ALASKA
STATEWIDE 800-478-3121 WILL
NOTIFY SUBSCRIBED UTILITIES ONLY.
OTHER UTILITIES NEED TO BE
CONTACTED INDIVIDUALLY.



KEYMAP

**95% DESIGN
DECEMBER 2014**



| FIELD BOOKS | BM NO. | LOCATION | ELEV. | DATA | DRAWN BY | CHECKED BY | DATA | DRAWN BY | CHECKED BY | REV | DATE | DESCRIPTION | BY | REV | DATE | DESCRIPTION | BY | |
|---------------------|--------|----------|-------|----------------|----------|------------|-----------------|----------|------------|-----|------|-------------|----|-----|------|-------------|----|--|
| DESIGN | | | | BASE | | | TELEPHONE | | | | | | | | | | | |
| STAKING | | | | TOPOGRAPHY | | | ELECTRIC | | | | | | | | | | | |
| ASBUILT | | | | PROFILE | | | CABLE TV | | | | | | | | | | | |
| CONTRACTOR | | | | SANITARY SEWER | | | DESIGN | | | | | | | | | | | |
| INSPECTOR | | | | STORM SEWER | | | QUANTITIES | | | | | | | | | | | |
| | | | | WATER | | | MUN. FINAL CHK. | | | | | | | | | | | |
| | | | | GAS | | | | | | | | | | | | | | |
| CONSTRUCTION RECORD | | | | VERTICAL DATUM | | | PLAN CHECK | | | | | | | | | | | |
| | | | | | | | | | | | | | | | | | | |

R&M
R&M Consultants, Inc.
9101 Vanguard Drive
Anchorage, Alaska 99507
907 522 1707 voice
907 522 3404 fax
www.rmconsult.com



**PROJECT MANAGEMENT AND
ENGINEERING DIVISION**

12-40
EKLUTNA RIVER BRIDGE REPLACEMENT AT OLD GLENN HWY
THUNDERBIRD DRIVE TO EKLUTNA LAKE ROAD

ROADWAY IMPROVEMENTS

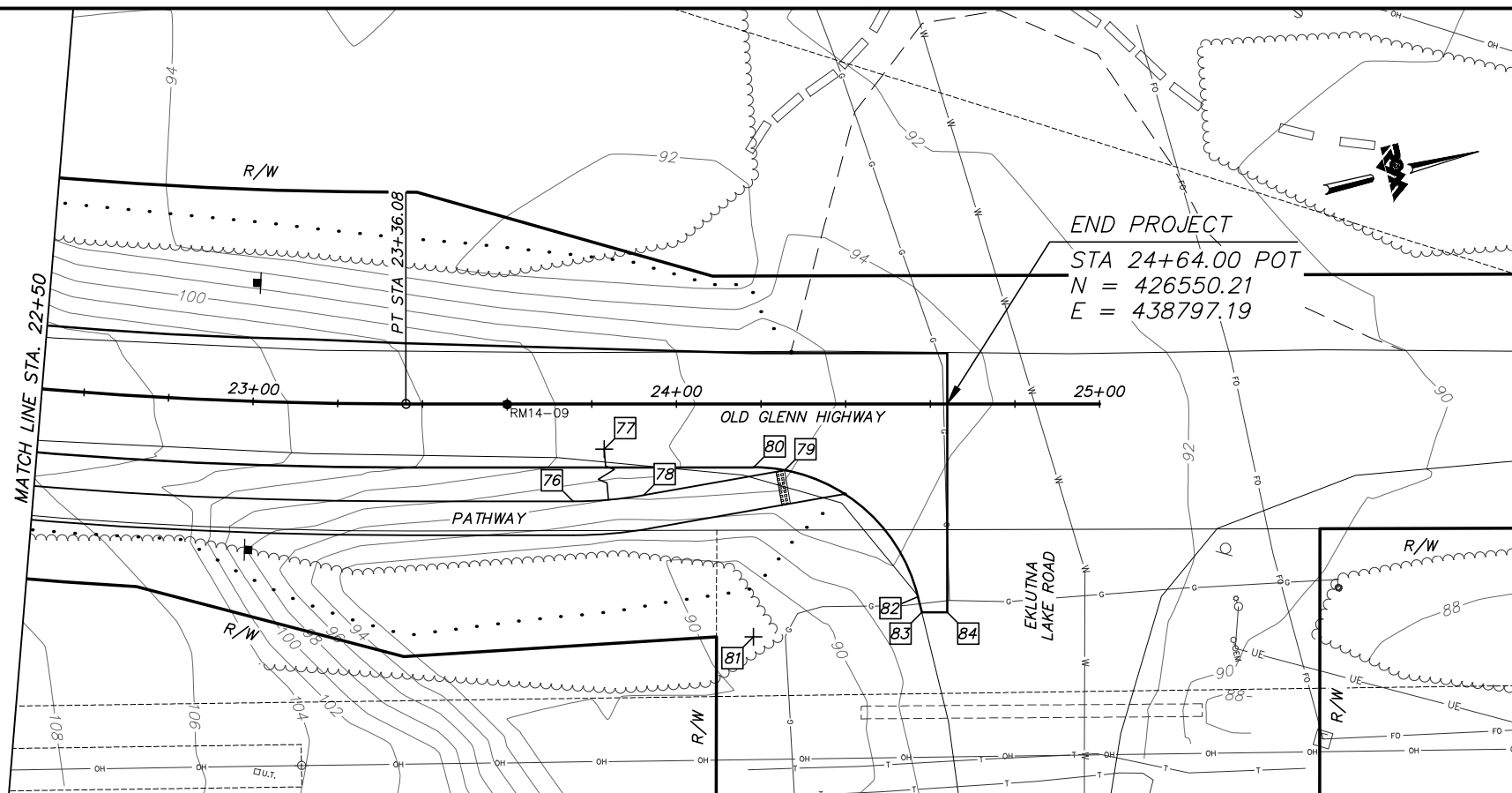
STA 18+00 TO STA 22+50

SCALE H: 1:20 DATE 12/23/14 GRID NW1965 SHEET 15 of 45
V: 1:10 ACCT. NO.

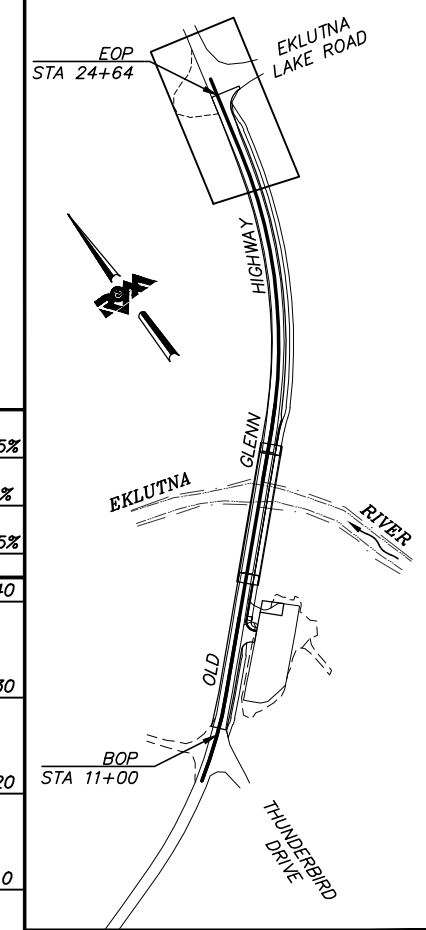
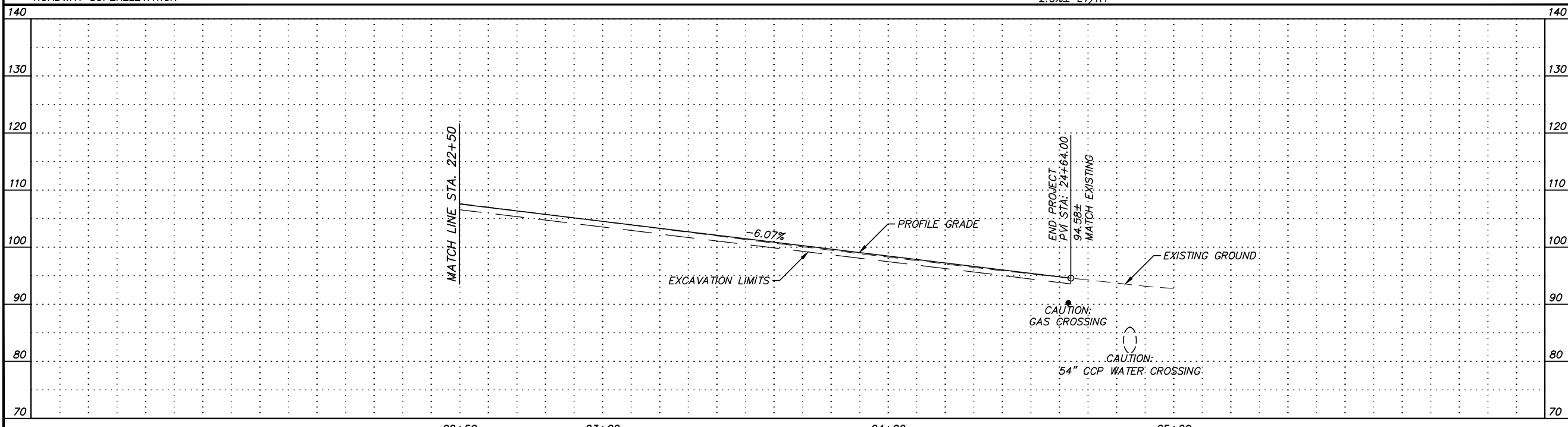
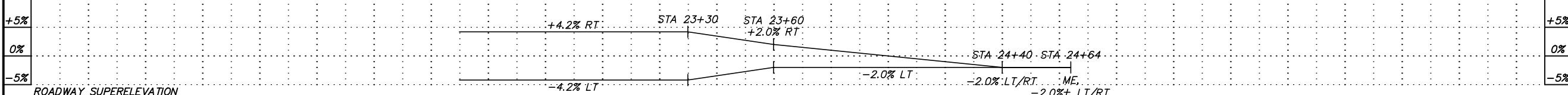


BEFORE YOU DIG
CALL FOR FREE
UNDERGROUND
LOCATION

LOCATE CALL CENTER OF ALASKA
STATEWIDE 800-478-3121 WILL
NOTIFY SUBSCRIBED UTILITIES ONLY.
OTHER UTILITIES NEED TO BE
CONTACTED INDIVIDUALLY.

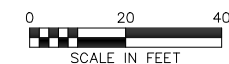


| # | POINT | STATION | OFFSET | REMARKS |
|---|-------|----------|----------|-------------------------|
| | 14 | 23+75.61 | 23.00 RT | PATHWAY PC |
| | 15 | 23+75.61 | 73.00 LT | PATHWAY RP, R=96' |
| | 16 | 23+92.28 | 21.54 RT | PATHWAY PT |
| | 17 | 24+25.56 | 15.67 RT | END PATHWAY |
| | 18 | 24+18.24 | 15.00 RT | RETURN RADIUS PC |
| | 19 | 24+18.24 | 55.00 RT | RETURN RADIUS RP, R=40' |
| | 20 | 24+57.11 | 45.54 RT | RETURN RADIUS PT |
| | 21 | 24+58.00 | 49.20 RT | MATCH EXISTING |
| | 22 | 24+64.00 | 49.20 RT | MATCH EXISTING |



KEYMAP

95% DESIGN
DECEMBER 2014



Plotted: 12/23/2014 9:40 AM File Location: Z:\project\2001.01 MOA_PME Replacement of Eklutna Bridge\Civil\ACAD\2001.01-F-P&P.dwg

| FIELD BOOKS | BM NO. | LOCATION | ELEV. | DATA | DRAWN BY | CHECKED BY | DATA | DRAWN BY | CHECKED BY | REV | DATE | DESCRIPTION | BY | REV | DATE | DESCRIPTION | BY |
|---------------------|--------|----------------|-------|----------------|----------|------------|-----------------|----------|------------|-----|------|-------------|----|-----|------|-------------|----|
| DESIGN | | | | BASE | | | TELEPHONE | | | | | | | | | | |
| STAKING | | | | TOPOGRAPHY | | | ELECTRIC | | | | | | | | | | |
| ASBUILT | | | | PROFILE | | | CABLE TV | | | | | | | | | | |
| CONTRACTOR | | | | SANITARY SEWER | | | DESIGN | | | | | | | | | | |
| INSPECTOR | | | | STORM SEWER | | | QUANTITIES | | | | | | | | | | |
| | | | | WATER | | | MUN. FINAL CHK. | | | | | | | | | | |
| | | | | GAS | | | | | | | | | | | | | |
| CONSTRUCTION RECORD | | VERTICAL DATUM | | PLAN CHECK | | | REVISIONS | | | | | | | | | | |

R&M Consultants, Inc.
9101 Vanguard Drive
Anchorage, Alaska 99507
907 522 1707 voice
907 522 3404 fax
www.rmconsult.com



PROJECT MANAGEMENT AND
ENGINEERING DIVISION

12-40
EKLUTNA RIVER BRIDGE REPLACEMENT AT OLD GLENN HWY
THUNDERBIRD DRIVE TO EKLUTNA LAKE ROAD

ROADWAY IMPROVEMENTS

STA 22+50 TO EOP

SCALE H: 1:20 DATE 12/23/14 GRID NW1965 SHEET 16 of 45
V: 1:10 ACCT. NO.