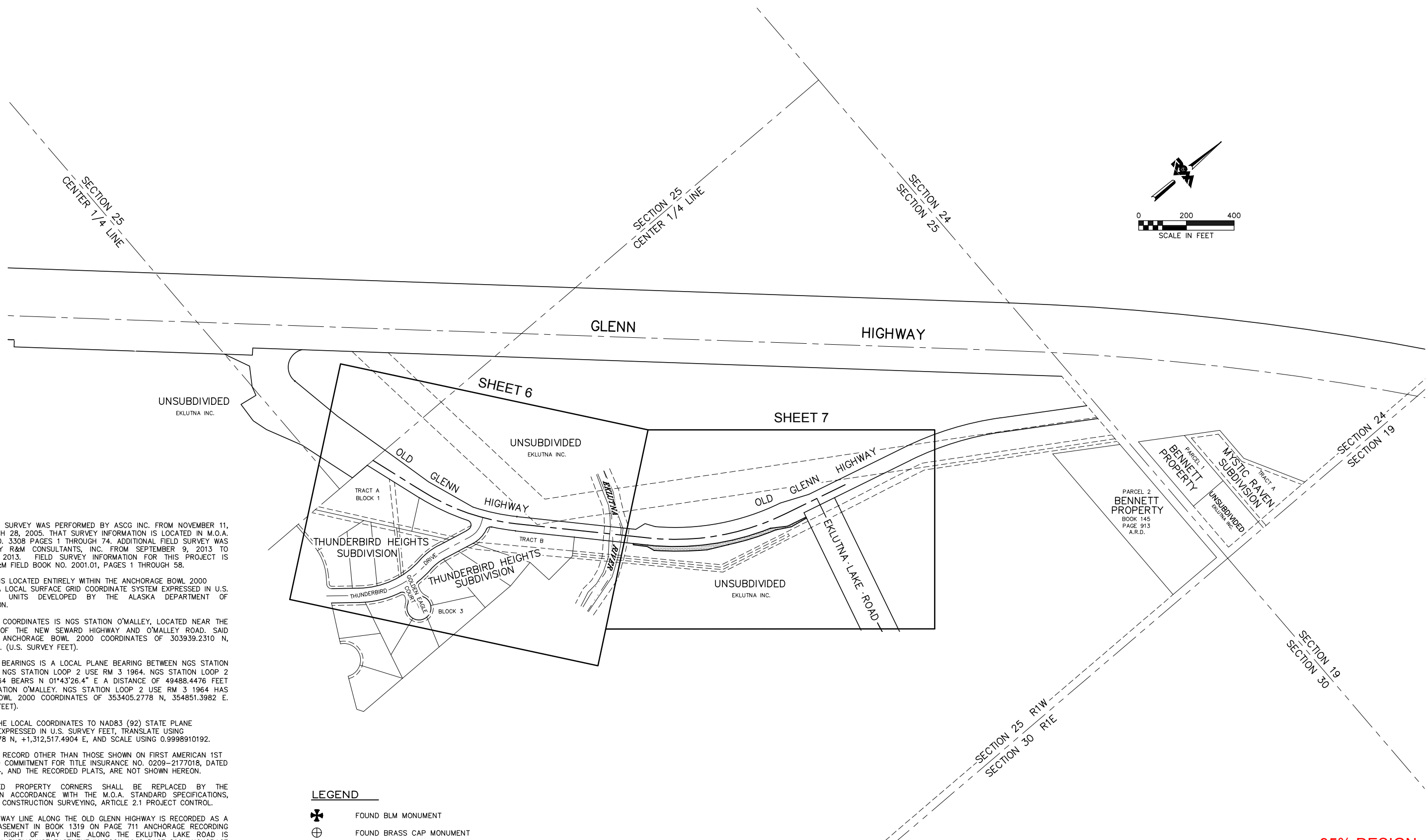
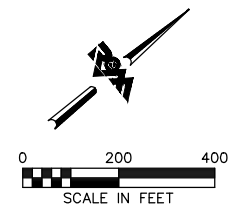


File Location: Z:\project\2001.01 MOA_PME Replacement of Eklutna Bridge\Survey\ACAD\2001.01 ROW 2013 for ENG.dwg
Plotted: 12/18/2014 6:05 PM



NOTES

1. ORIGINAL FIELD SURVEY WAS PERFORMED BY ASCG INC. FROM NOVEMBER 11, 2004 TO MARCH 28, 2005. THAT SURVEY INFORMATION IS LOCATED IN M.O.A. FIELD BOOK NO. 3308 PAGES 1 THROUGH 74. ADDITIONAL FIELD SURVEY WAS PERFORMED BY R&M CONSULTANTS, INC. FROM SEPTEMBER 9, 2013 TO NOVEMBER 8, 2013. FIELD SURVEY INFORMATION FOR THIS PROJECT IS LOCATED IN R&M FIELD BOOK NO. 2001.01, PAGES 1 THROUGH 58.
2. THIS PROJECT IS LOCATED ENTIRELY WITHIN THE ANCHORAGE BOWL 2000 ADJUSTMENT, A LOCAL SURFACE GRID COORDINATE SYSTEM EXPRESSED IN U.S. SURVEY FEET UNITS DEVELOPED BY THE ALASKA DEPARTMENT OF TRANSPORTATION.
3. THE BASIS OF COORDINATES IS NGS STATION O'MALLEY, LOCATED NEAR THE INTERSECTION OF THE NEW SEWARD HIGHWAY AND O'MALLEY ROAD. SAID STATION HAS ANCHORAGE BOWL 2000 COORDINATES OF 303939.2310 N, 353362.5446 E. (U.S. SURVEY FEET).
4. THE BASIS OF BEARINGS IS A LOCAL PLANE BEARING BETWEEN NGS STATION O'MALLEY AND NGS STATION LOOP 2 USE RM 3 1964. NGS STATION LOOP 2 USE RM 3 1964 BEARS N 01°43'26.4" E A DISTANCE OF 49488.4476 FEET FROM NGS STATION O'MALLEY. NGS STATION LOOP 2 USE RM 3 1964 HAS ANCHORAGE BOWL 2000 COORDINATES OF 353405.2778 N, 354851.3982 E. (U.S. SURVEY FEET).
5. TO CONVERT THE LOCAL COORDINATES TO NAD83 (92) STATE PLANE COORDINATES EXPRESSED IN U.S. SURVEY FEET, TRANSLATE USING +2,296,868.6878 N, +1,312,517.4904 E, AND SCALE USING 0.9998910192.
6. EASEMENTS OF RECORD OTHER THAN THOSE SHOWN ON FIRST AMERICAN 1ST AMENDMENT TO COMMITMENT FOR TITLE INSURANCE NO. 0209-2177018, DATED APRIL 30, 2014, AND THE RECORDED PLATS, ARE NOT SHOWN HEREON.
7. ALL DISTURBED PROPERTY CORNERS SHALL BE REPLACED BY THE CONTRACTOR IN ACCORDANCE WITH THE M.O.A. STANDARD SPECIFICATIONS, SECTION 65.02 CONSTRUCTION SURVEYING, ARTICLE 2.1 PROJECT CONTROL.
8. THE RIGHT OF WAY LINE ALONG THE OLD GLENN HIGHWAY IS RECORDED AS A PUBLIC USE EASEMENT IN BOOK 1319 ON PAGE 711 ANCHORAGE RECORDING DISTRICT. THE RIGHT OF WAY LINE ALONG THE EKLUTNA LAKE ROAD IS RECORDED AS A PUBLIC USE EASEMENT IN BOOK 1648 PAGE 899 ANCHORAGE RECORDING DISTRICT.

LEGEND

- FOUND BLM MONUMENT
- FOUND BRASS CAP MONUMENT
- FOUND 5/8" REBAR

**95% DESIGN
DECEMBER 2014**

FIELD BOOKS	BM NO.	LOCATION	ELEV.	DATA	DRAWN BY	CHECKED BY	DATA	DRAWN BY	CHECKED BY	REV	DATE	DESCRIPTION	BY	REV	DATE	DESCRIPTION	BY
DESIGN				BASE			TELEPHONE										
STAKING				TOPOGRAPHY			ELECTRIC										
ASBUILT				PROFILE			CABLE TV										
CONTRACTOR				SANITARY SEWER			DESIGN										
INSPECTOR				STORM SEWER			QUANTITIES										
CONSTRUCTION RECORD				WATER			MUN. FINAL CHK.										
				GAS													

R&M
R&M Consultants, Inc.
9101 Vanguard Drive
Anchorage, Alaska 99507
907 522 1707 voice
907 522 3404 fax
www.rmconsult.com



**PROJECT MANAGEMENT AND
ENGINEERING DIVISION**

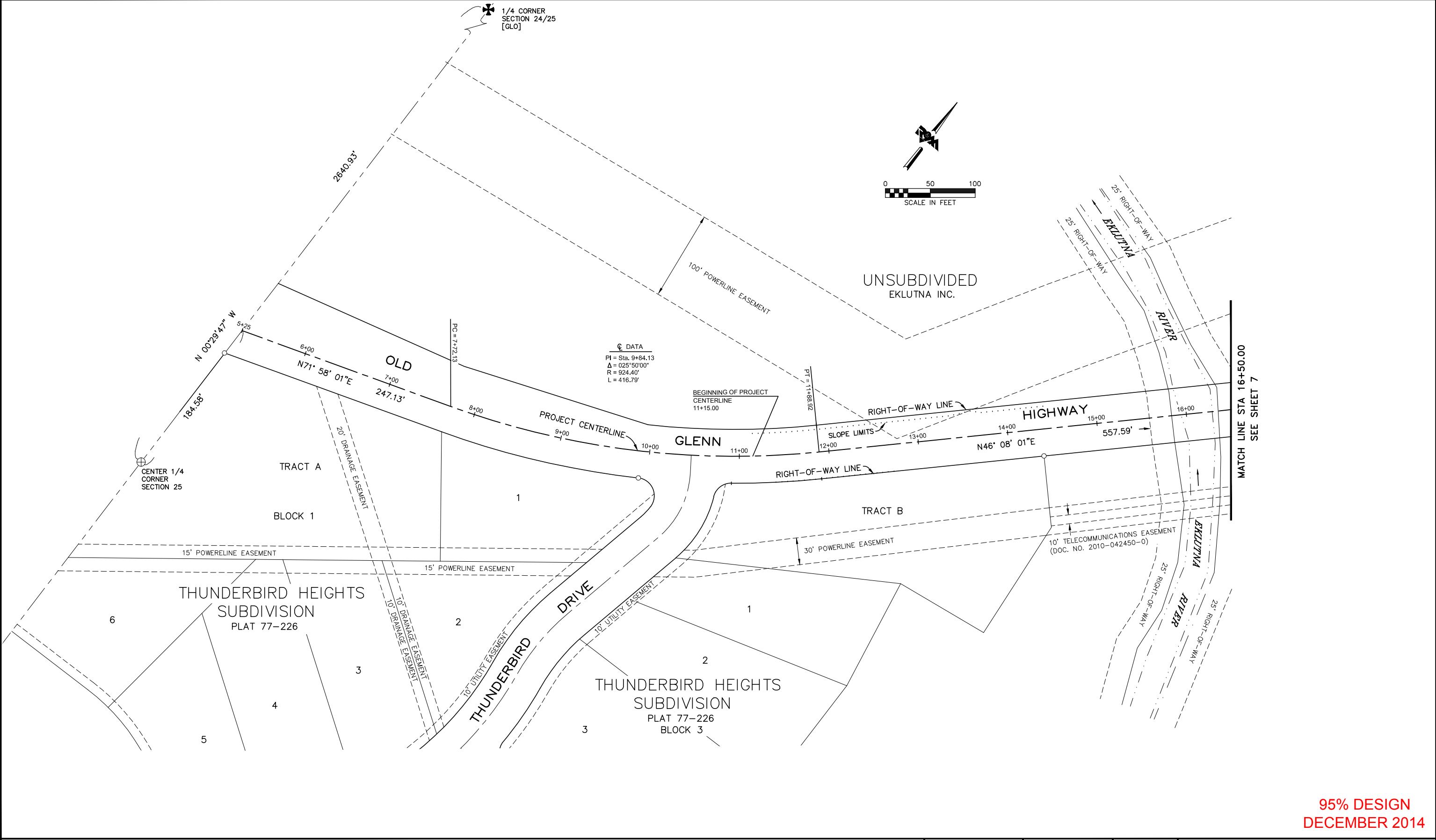
12-40
EKLUTNA RIVER BRIDGE REPLACEMENT AT OLD GLENN HWY
THUNDERBIRD DRIVE TO EKLUTNA LAKE ROAD

RIGHT-OF-WAY MAP

OVERVIEW

SCALE: DATE 11/26/14 GRID NW1965 SHEET 5 of 45
ACCT. NO.

Plotted: 12/18/2014 6:05 PM File Location: Z:\project\2001.01 MOA_PME Replacement of Eklutna Bridge\Survey\ACAD\2001.01 ROW 2013 for ENG.dwg



**95% DESIGN
 DECEMBER 2014**

FIELD BOOKS	BM NO.	LOCATION	ELEV.	DATA	DRAWN BY	CHECKED BY	DATA	DRAWN BY	CHECKED BY	REV	DATE	DESCRIPTION	BY	REV	DATE	DESCRIPTION	BY
DESIGN				BASE			TELEPHONE										
STAKING				TOPOGRAPHY			ELECTRIC										
ASBUILT				PROFILE			CABLE TV										
CONTRACTOR				SANITARY SEWER			DESIGN										
INSPECTOR				STORM SEWER			QUANTITIES										
CONSTRUCTION RECORD				WATER			MUN. FINAL CHK.										
				GAS													
				PLAN CHECK													
				REVISIONS													

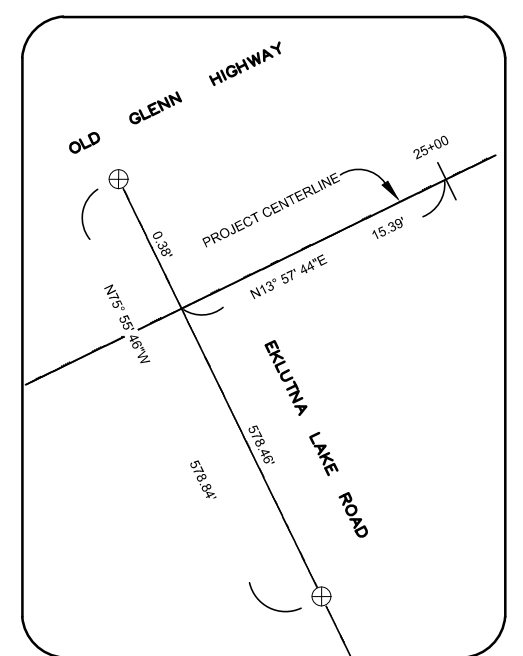
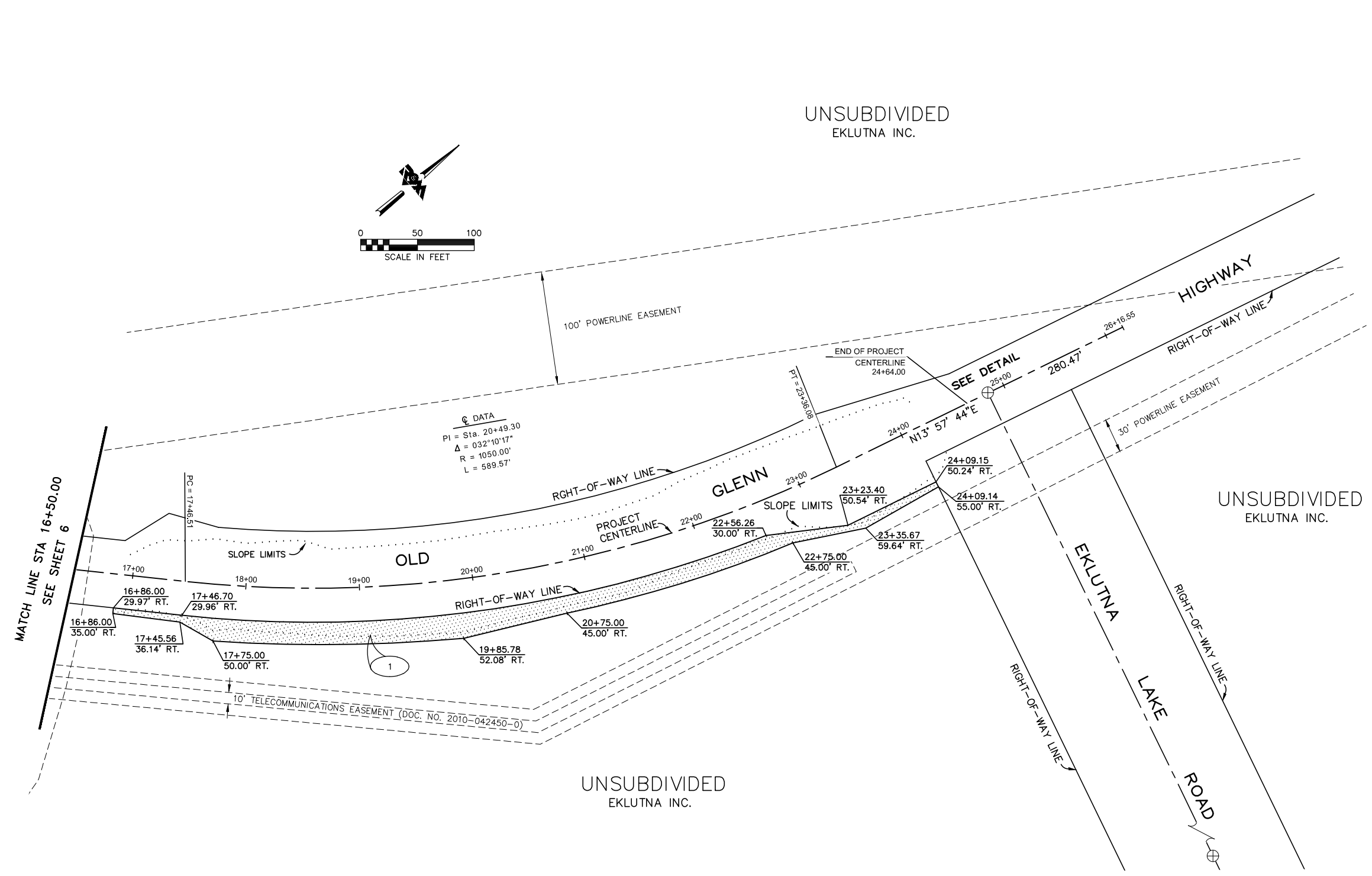
R&M Consultants, Inc.
 9101 Vanguard Drive
 Anchorage, Alaska 99507
 907 522 1707 voice
 907 522 3404 fax
 www.rmconsult.com



PROJECT MANAGEMENT AND ENGINEERING DIVISION
 12-40
 EKLUTNA RIVER BRIDGE REPLACEMENT AT OLD GLENN HWY
 THUNDERBIRD DRIVE TO EKLUTNA LAKE ROAD
RIGHT-OF-WAY MAP
 BOP TO STA 16+50
 DATE 11/26/14 GRID NW1965
 SCALE ACCT. NO. SHEET 6 of 45

File Location: Z:\project\2001.01 MOA_PME Replacement of Eklutna Bridge\Survey\ACAD\2001.01 ROW 2013 for ENG.dwg

Plotted: 12/18/2014 6:05 PM



DETAIL
NOT TO SCALE

PARCEL INFORMATION					
PARCEL NO.	LEGAL DESCRIPTION	OWNER	INTEREST TO BE ACQUIRED	NET TAKE	EASEMENT RECORDING DATA
1	PORTION OF THE NE 1/4, SECTION 25, T16N, R1W, S.M., ALASKA	EKLUTNA INC.	PUBLIC USE EASEMENT	10,870 SQ. FT.	

95% DESIGN
DECEMBER 2014

FIELD BOOKS	BM NO.	LOCATION	ELEV.	DATA	DRAWN BY	CHECKED BY	DATA	DRAWN BY	CHECKED BY	REV	DATE	DESCRIPTION	BY	REV	DATE	DESCRIPTION	BY
DESIGN				BASE			TELEPHONE										
STAKING				TOPOGRAPHY			ELECTRIC										
ASBUILT				PROFILE			CABLE TV										
CONTRACTOR				SANITARY SEWER			DESIGN										
INSPECTOR				STORM SEWER			QUANTITIES										
CONSTRUCTION RECORD				WATER			MUN. FINAL CHK.										
				GAS													

R&M
R&M Consultants, Inc.
9101 Vanguard Drive
Anchorage, Alaska 99507
907 522 1707 voice
907 522 3404 fax
www.rmconsult.com



PROJECT MANAGEMENT AND ENGINEERING DIVISION

12-40
EKLUTNA RIVER BRIDGE REPLACEMENT AT OLD GLENN HWY
THUNDERBIRD DRIVE TO EKLUTNA LAKE ROAD

RIGHT-OF-WAY MAP

STA 16+50 TO EOP

DATE 11/26/14 GRID NW1965 SHEET 7 of 45

SCALE ACCT. NO.